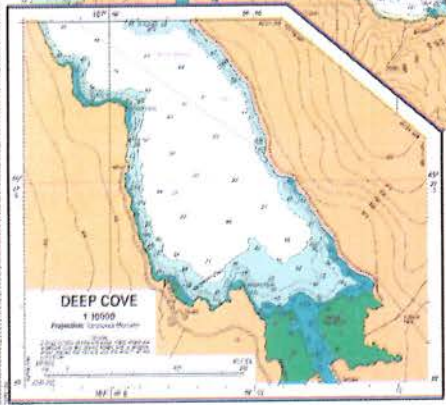
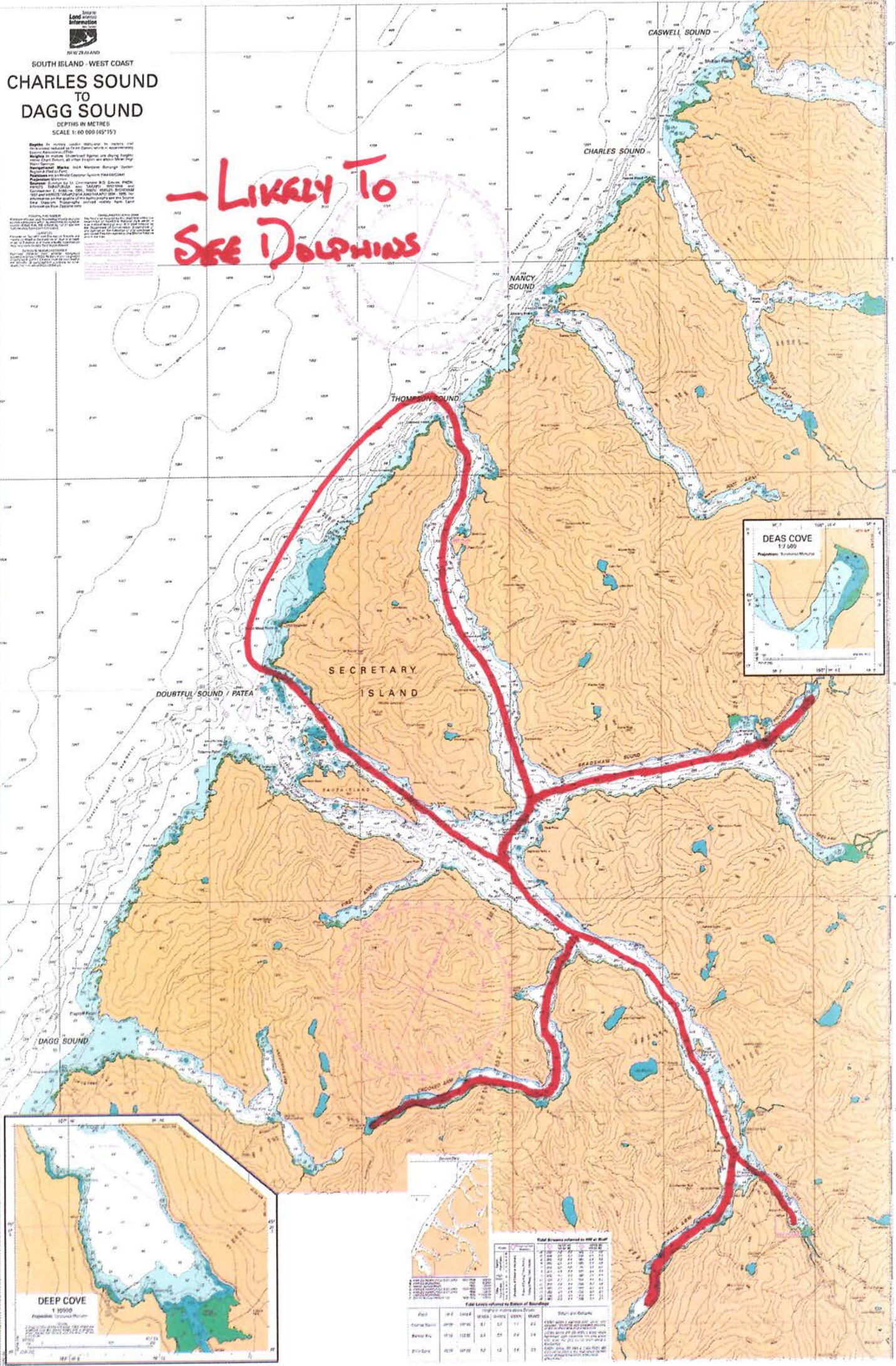




SOUTH ISLAND - WEST COAST
CHARLES SOUND
TO
DAGG SOUND
 DEPTHS IN METRES
 SCALE 1:60 000 (45°15')

Notes: In using under shelter to charts and depths are subject to tidal changes in accordance with the Admiralty Tide Tables. Heights in metres. Uncharted lights are shown by a white circle with a red dot. All other lights are shown by a white circle with a red dot. **Warning:** This chart is not to be used for navigation purposes. It is intended for reference only. **Projection:** Transverse Mercator. **Scale:** 1:60 000. **Contour Interval:** 10 metres. **Soundings:** In metres. **Depth:** In metres. **Chart No. 1000.** **Published:** 1984. **Revised:** 1984. **Supersedes:** 1000 (1984). **Replaces:** 1000 (1984). **Chart No. 1000.** **Published:** 1984. **Revised:** 1984. **Supersedes:** 1000 (1984). **Replaces:** 1000 (1984).

Likely To See Dolphins



Full Lines referred to in Note at Staff

Line No.	Length	Area	Volume	Weight	Value
1	100	100	100	100	100
2	200	200	200	200	200
3	300	300	300	300	300
4	400	400	400	400	400
5	500	500	500	500	500
6	600	600	600	600	600
7	700	700	700	700	700
8	800	800	800	800	800
9	900	900	900	900	900
10	1000	1000	1000	1000	1000

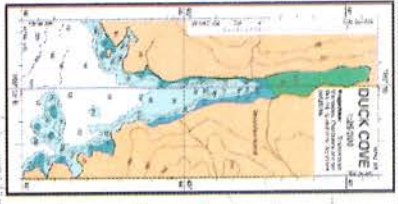
Full Lines referred to in Note at Staff

Line No.	Length	Area	Volume	Weight	Value
11	1100	1100	1100	1100	1100
12	1200	1200	1200	1200	1200
13	1300	1300	1300	1300	1300
14	1400	1400	1400	1400	1400
15	1500	1500	1500	1500	1500
16	1600	1600	1600	1600	1600
17	1700	1700	1700	1700	1700
18	1800	1800	1800	1800	1800
19	1900	1900	1900	1900	1900
20	2000	2000	2000	2000	2000

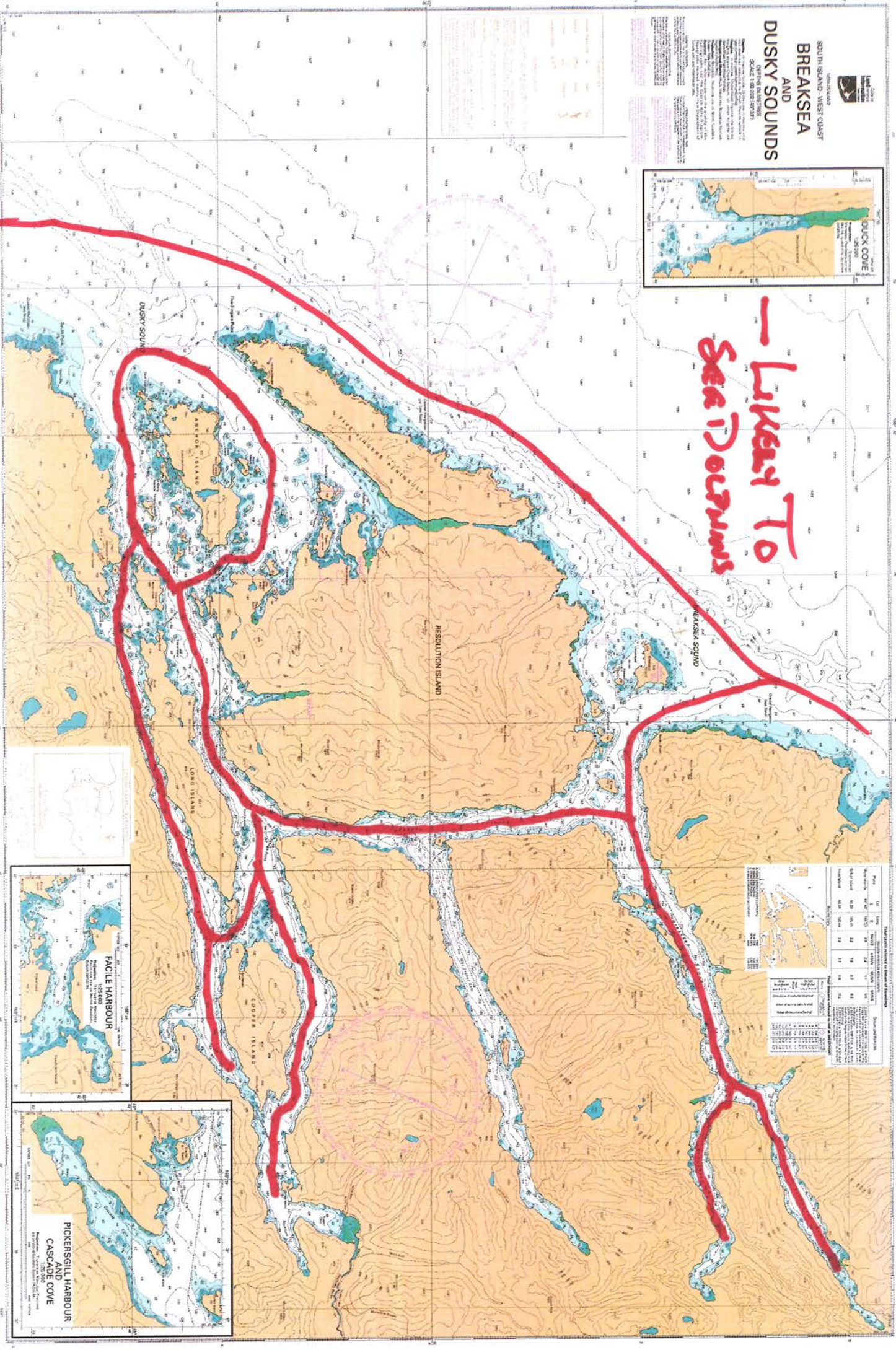


SOUTH ISLAND - WEST COAST BREAKSEA AND DUSKY SOUNDS

DEPTHS IN METRES
SCALE 1:50 000



*— Likely To
See Dolphins*



PAKARANUI SOUNDING SYSTEM

Depth	10	20	30	40	50	60	70	80	90	100
10	10	11	12	13	14	15	16	17	18	19
20	20	21	22	23	24	25	26	27	28	29
30	30	31	32	33	34	35	36	37	38	39
40	40	41	42	43	44	45	46	47	48	49
50	50	51	52	53	54	55	56	57	58	59
60	60	61	62	63	64	65	66	67	68	69
70	70	71	72	73	74	75	76	77	78	79
80	80	81	82	83	84	85	86	87	88	89
90	90	91	92	93	94	95	96	97	98	99
100	100	101	102	103	104	105	106	107	108	109

