

CMS

CONSERVATION MANAGEMENT STRATEGY

Auckland 2014–2024, Volume II Maps
Operative 17 November 2014



Department of
Conservation
Te Papa Atawhai

Cover image: Trampers admire the view from Hira^kimatā (Mount Hobson) on the multi-day walk, the Aotea Track, on Great Barrier Island (Aotea Island). *Photo: Andris Apse*

November 2014, New Zealand Department of Conservation



This document is protected by copyright owned by the Department of Conservation on behalf of the Crown. Unless indicated otherwise for specific items or collections of content, this copyright material is licensed for re-use under the Creative Commons Attribution 3.0 New Zealand licence. In essence, you are free to copy, distribute and adapt the material, as long as you attribute it to the Department of Conservation and abide by the other licence terms.

To view a copy of this licence, visit <http://creativecommons.org/licenses/by/3.0/nz/>

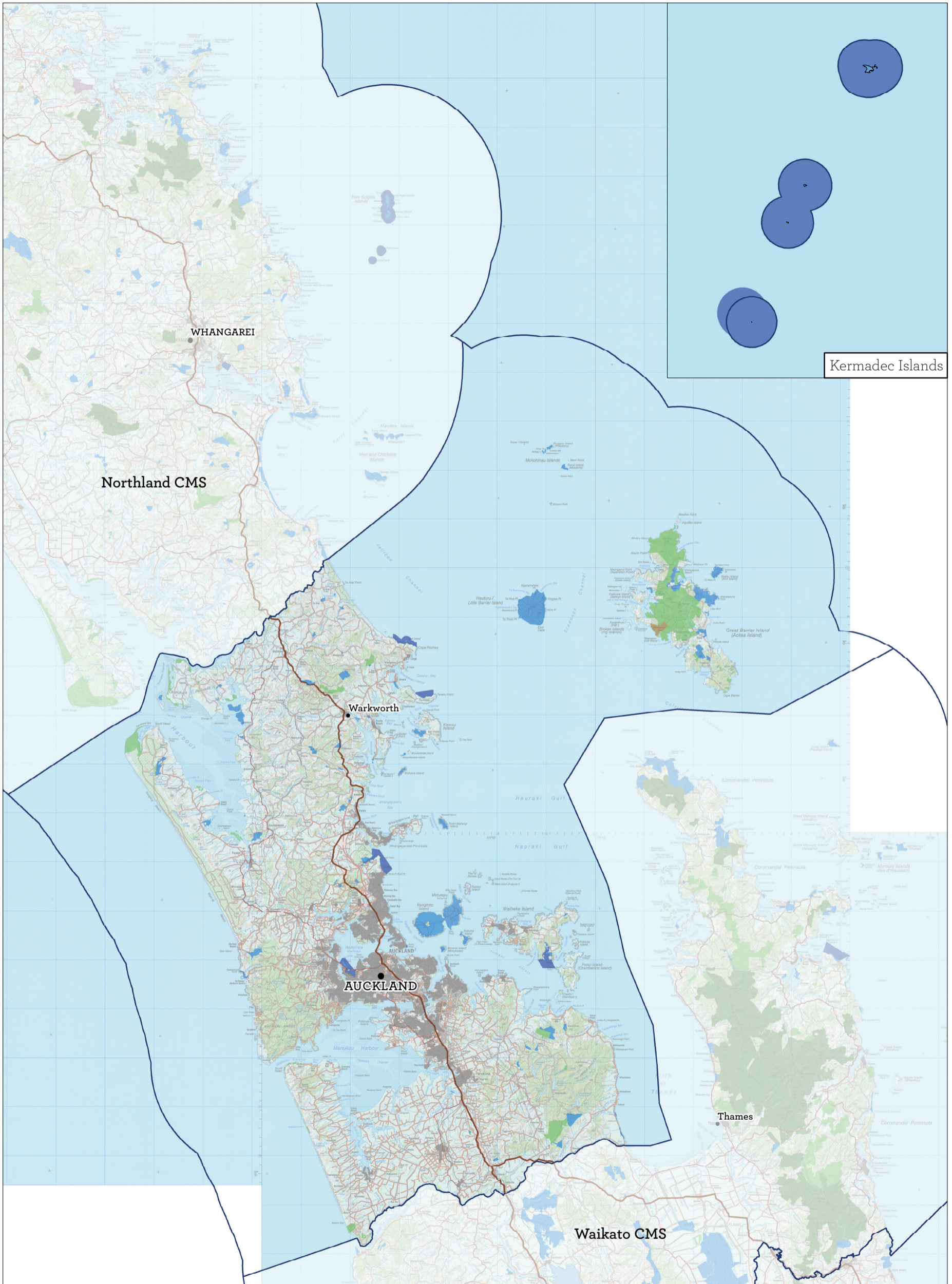
The Department of Conservation gives no warranty in relation to the data and accepts no liability for any loss, damage or costs relating to any use of the data. Cadastral and topographic information derived from Land Information New Zealand.

ISBN ISBN 978-0-478-15028-5 (print)
ISBN ISBN 978-0-478-15030-8 (online)

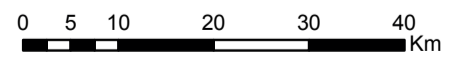
In the interest of forest conservation, we support paperless electronic publishing.

Contents

Map 1: Auckland overview (see also public conservation land inventory maps and tables 9.1–9.9)	5
Map 2: Ecosystem priorities and Icon and Gateway destinations	6
Map 3: Visitor management zones overview (see also visitor management zone maps 10.1–10.9)	7
Map 4: Aircraft access zones overview (see also aircraft access maps 11.1–11.9)	8
Map 5: Hauraki Gulf Marine Park and West Coast Marine Mammal Sanctuary	9
Map 6: Treaty Settlement: Waikato River Co-management Area	10
Map 7: Places overview	11
Map 7.1: Marine Reserves Place – Kermadec Islands Marine Reserve	12
Map 7.2: Marine Reserves Place – Long Bay-Okura Marine Reserve	13
Map 7.3: Marine Reserves Place – Motu Manawa-Pollen Island Marine Reserve	14
Map 7.4: Marine Reserves Place – Tāwharanui Marine Reserve	15
Map 7.5: Marine Reserves Place – Te Matuku Marine Reserve	16
Map 7.6: Leigh Reserves Complex (Wakatūwhenua) Place	17
Map 7.7: Te Hauturu-o-Toi/Little Barrier Island Place	18
Map 7.8: Kermadec Islands Place	19
Map 7.9: Mokohinau Islands Place	20
Map 7.10: Great Barrier Island (Aotea Island) Place	21
Map 7.11: Kaipara Harbour-Te Arai/Pakiri Place	22
Map 7.12: Kawau Island Place	23
Map 7.13: Motuora Island Place	24
Map 7.14: Tiritiri Matangi Island Place	25
Map 7.15: Motutapu and Rangitoto Islands Place	26
Map 7.16: Motuihe Island/Te Motu-a-Ihenga Place	27
Map 7.17: Browns Island (Motukorea) Place	28
Map 7.18: Coastal Defence Historic Reserves Place – Maungauika/North Head and Fort Takapuna	29
Map 7.19: Coastal Defence Historic Reserves Place – Stony Batter	30
Map 7.20: Firth of Thames/Tīkapa Moana Wetland Place	31
Map 8: Detail maps index	33
Maps 9.1–9.9: Public conservation land inventory maps and tables	34
Maps 10.1–10.9: Visitor management zones—detail maps	55
Maps 11.1–11.9: Aircraft access zones—detail maps	65
Legend	Inside back cover



Map 1 Auckland overview
 Conservation Management Strategy
 Auckland



[Click to open maps 2-6](#)