



CMS

CONSERVATION MANAGEMENT STRATEGY

Waikato 2014–2024, Volume II Maps
Operative 29 September 2014



Department of
Conservation
Te Papa Atawhai

Cover image: Rider on the Timber Trail, Pureora Forest Park
Photo: DOC

September 2014, New Zealand Department of Conservation



This document is protected by copyright owned by the Department of Conservation on behalf of the Crown. Unless indicated otherwise for specific items or collections of content, this copyright material is licensed for re-use under the Creative Commons Attribution 3.0 New Zealand licence. In essence, you are free to copy, distribute and adapt the material, as long as you attribute it to the Department of Conservation and abide by the other licence terms.

To view a copy of this licence, visit <http://creativecommons.org/licenses/by/3.0/nz/>

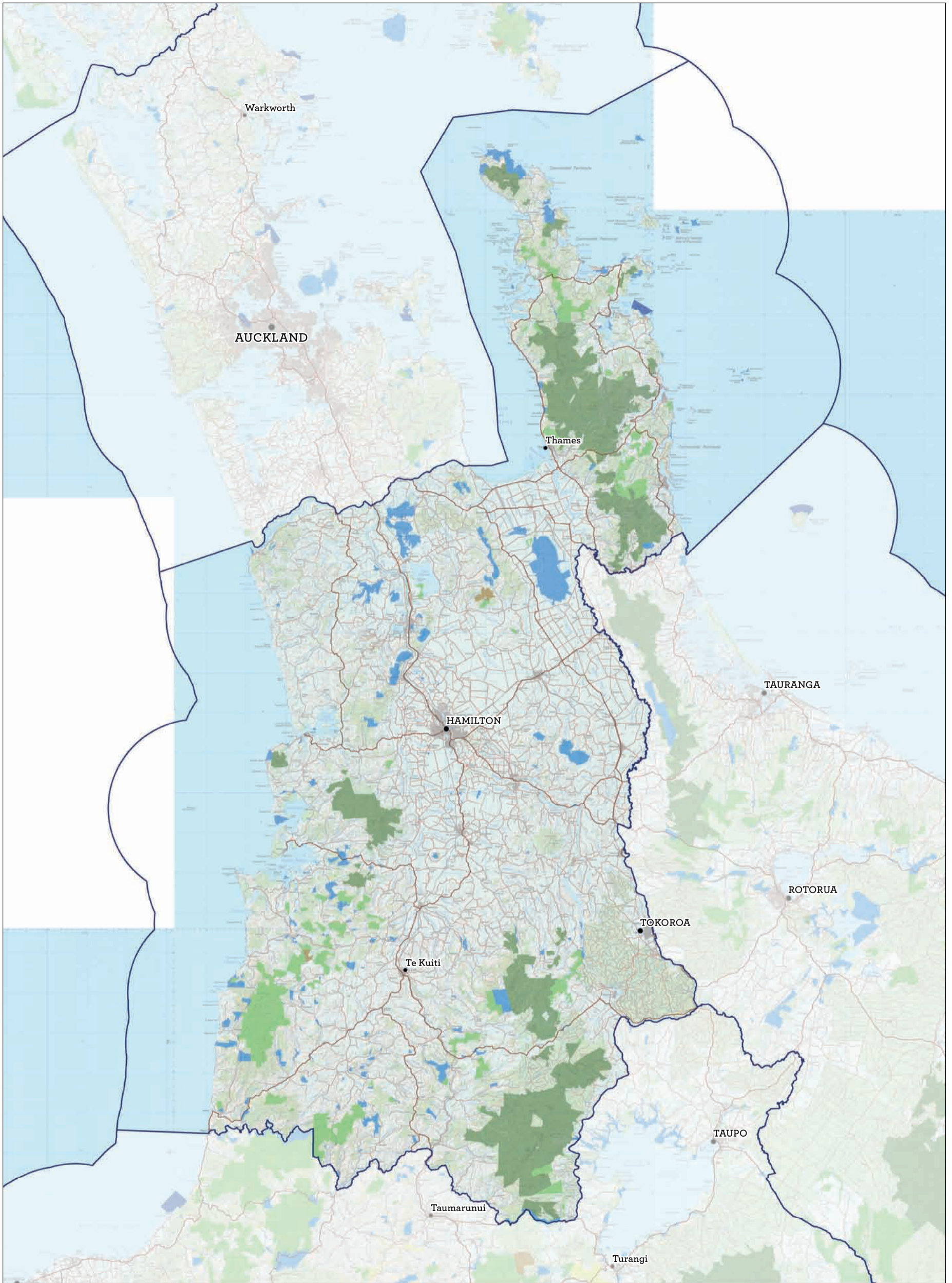
The Department of Conservation gives no warranty in relation to the data and accepts no liability for any loss, damage or costs relating to any use of the data. Cadastral and topographic information derived from Land Information New Zealand.

ISBN 978-0-478-15022-3 (print)
ISBN 978-0-478-15024-7 (online)

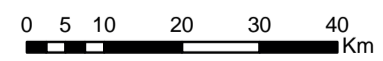
In the interest of forest conservation, we support paperless electronic publishing.

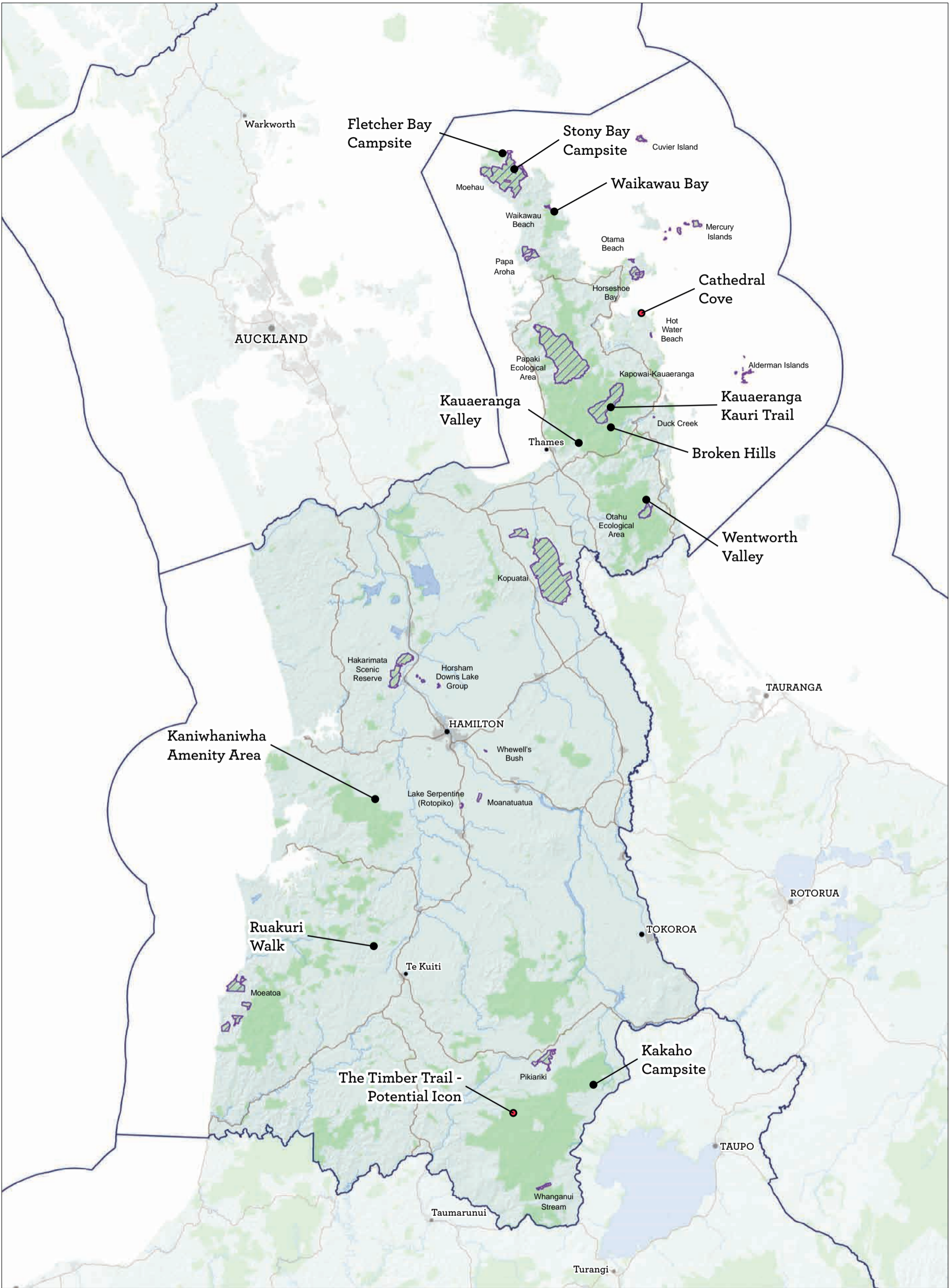
Contents

Map 1: Waikato overview (see also public conservation land inventory maps and tables 10.1–10.12)	5
Map 2: Ecosystem priorities and Icon and Gateway destinations	6
Map 3: Visitor management zones overview (see also visitor management zone maps 11.1–11.12)	7
Map 4: Aircraft access zones overview (see also aircraft access maps 12.1–12.12)	8
Map 5: Hauraki Gulf Marine Park and West Coast Marine Mammal sanctuary	9
Map 6: Treaty Settlement: Waikato River and Waipa River Co-management Areas	10
Map 7: Treaty Settlement: Raukawa and Te Maru o Rereahu Trust Settlement Areas	11
Map 8: Places overview	12
Map 8.1: Hauraki Islands Place	13
Map 8.1.1: Hauraki Islands Place—detail	14
Map 8.2: Hauraki–Coromandel Peninsula Place	15
Map 8.2.1: Hauraki–Coromandel Peninsula Place—detail	16
Map 8.3: Hahei Coast and Marine Reserve Place	17
Map 8.3.1: Hahei Coast and Marine Reserve Place—detail	18
Map 8.4: Firth of Thames/Tīkapa Moana Wetland Place	19
Map 8.5: Freshwater Wetlands Place	20
Map 8.5.1: Freshwater Wetlands Place—detail	21
Map 8.6: Karioi to Whareorino Place	22
Map 8.6.1: Karioi to Whareorino Place—detail	23
Map 8.7: Waitomo Place	24
Map 8.8: Pureora Place	25
Map 8.8.1: Pureora Place—motorised vehicle access	26
Map 8.8.2: Pureora Place—mountain bike access	27
Map 8.8.3: Pureora Place—horse access	28
Map 9: Detail maps index	29
Maps 10.1–10.12: Public conservation land inventory maps and tables	30
Maps 11.1–11.12: Visitor management zones—detail maps	67
Maps 12.1–12.12: Aircraft access zones—detail maps	79
Legend	Inside back cover



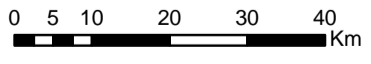
Map 1 Waikato overview
 Conservation Management Strategy
 Waikato

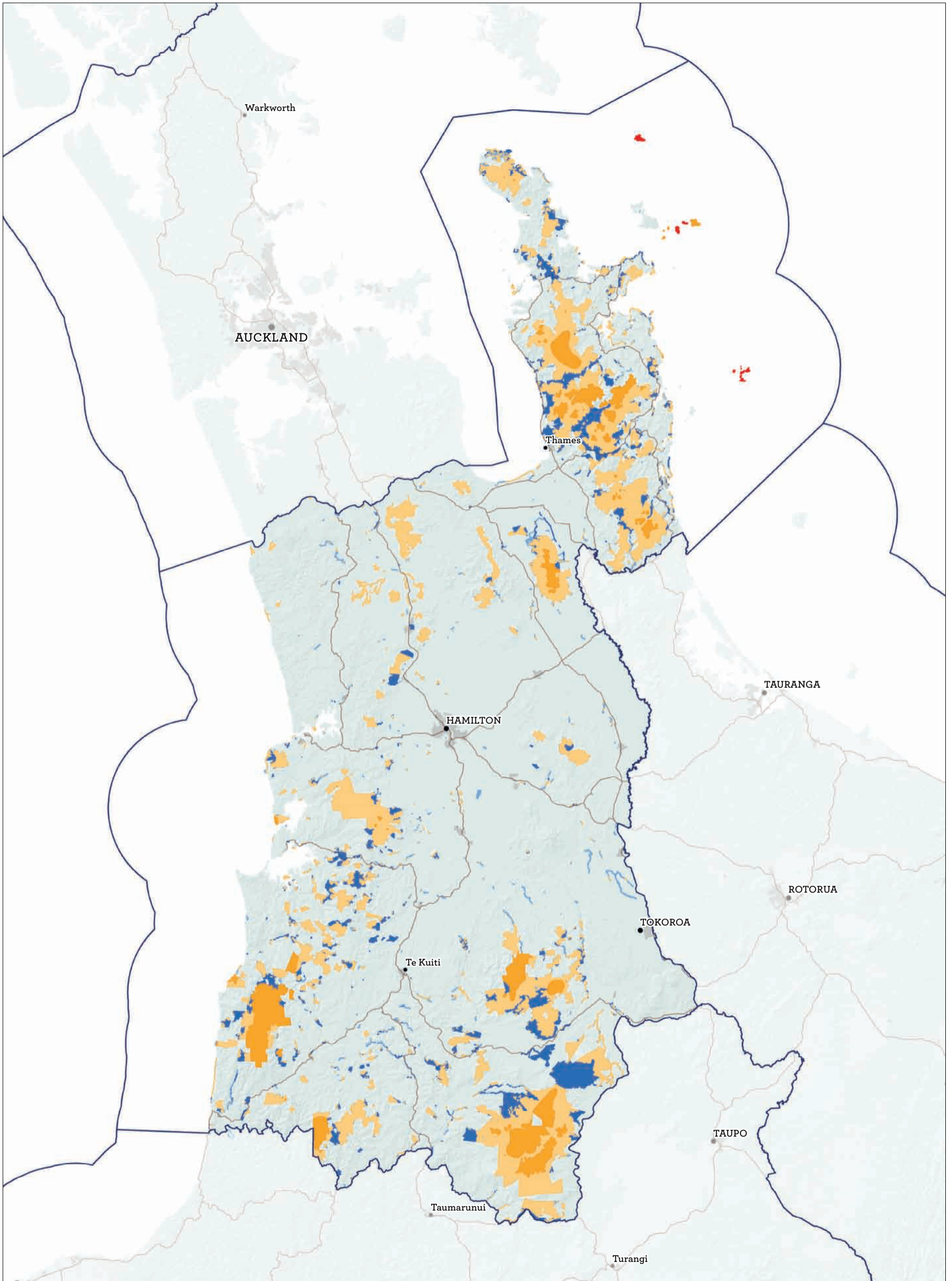




Map 2 Ecosystem priorities and Icon and Gateway destinations

Conservation Management Strategy
Waikato



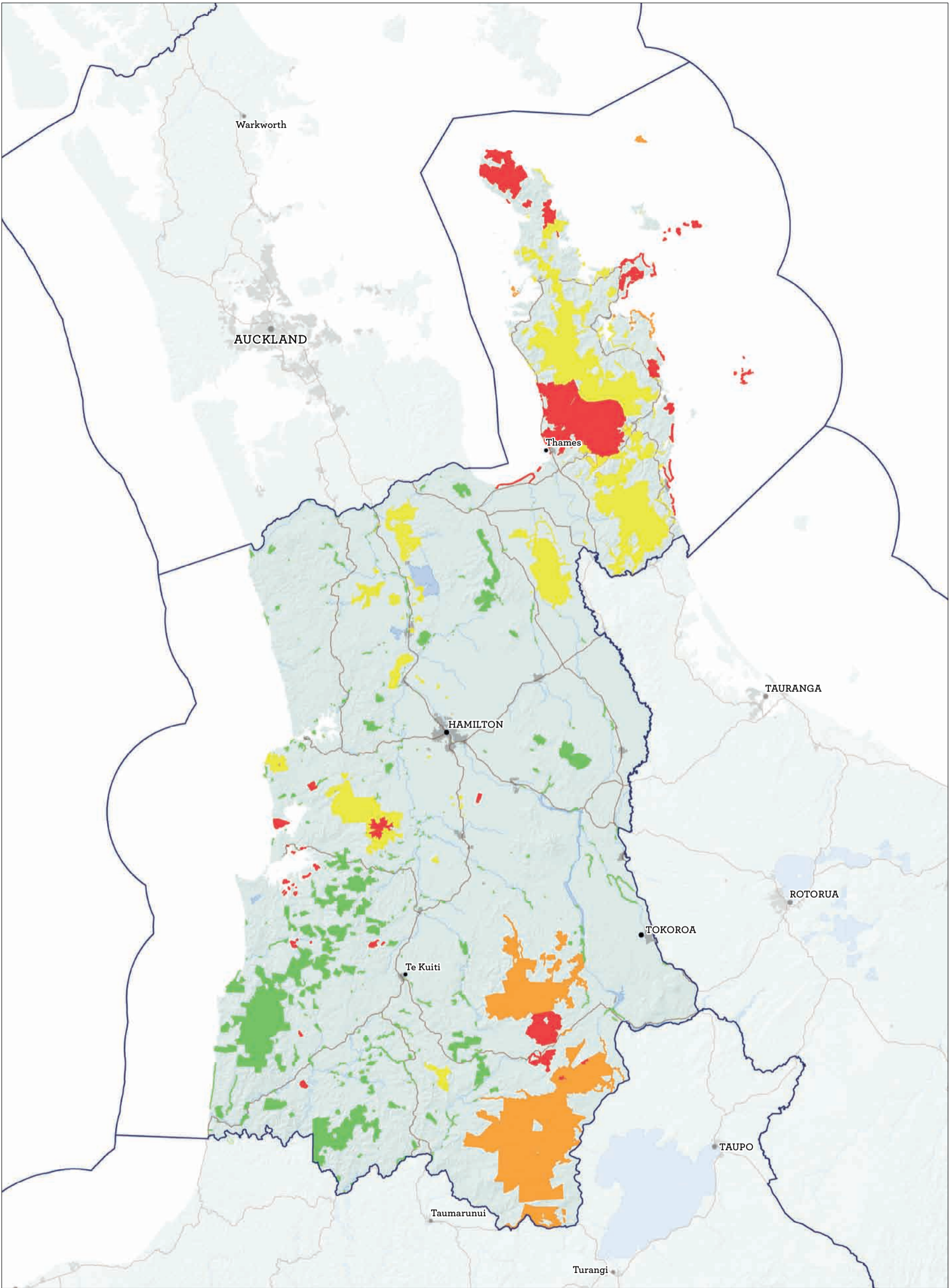


Map 3 Visitor management zones overview

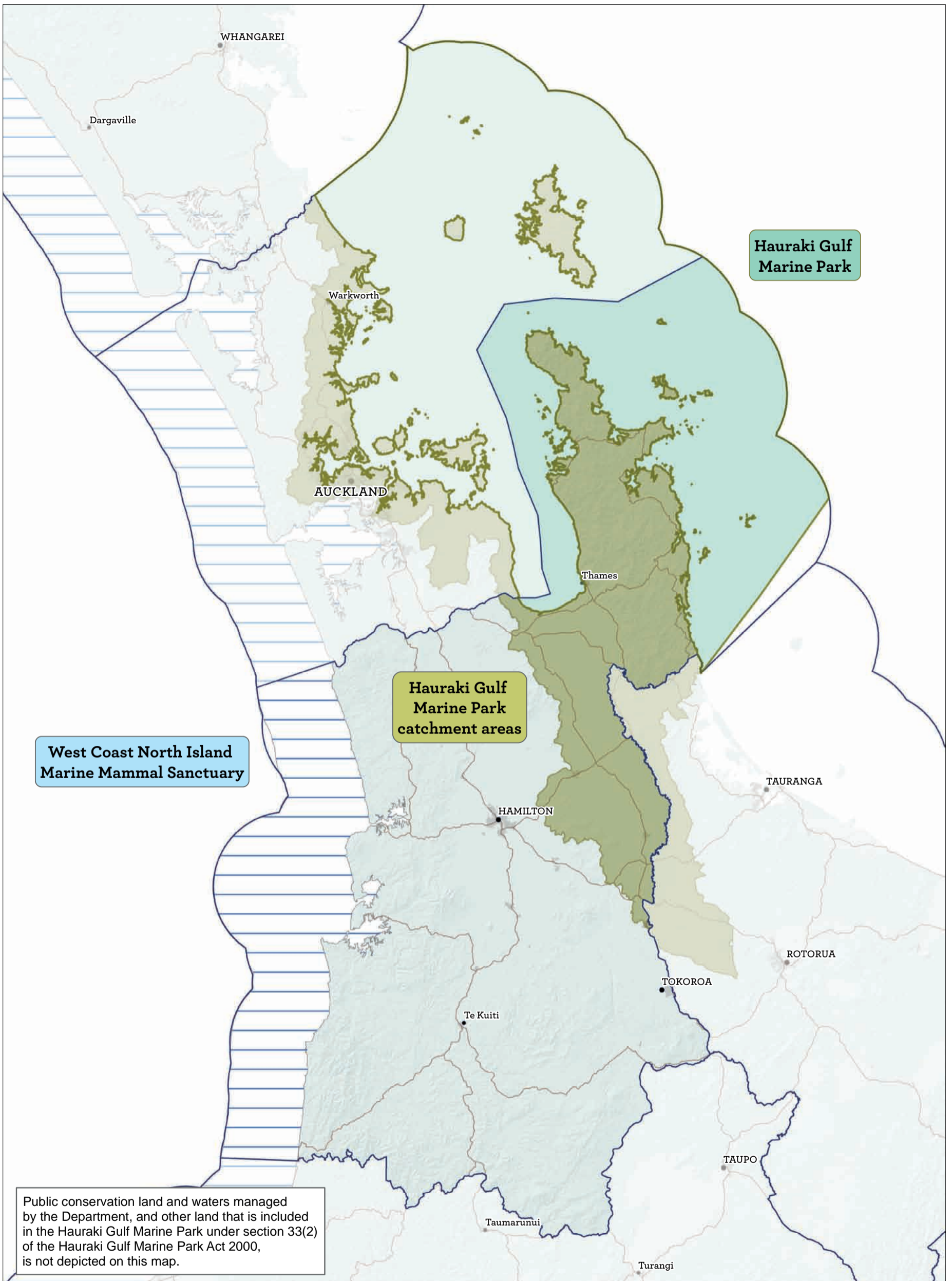
Conservation Management Strategy
Waikato

0 5 10 20 30 40 Km



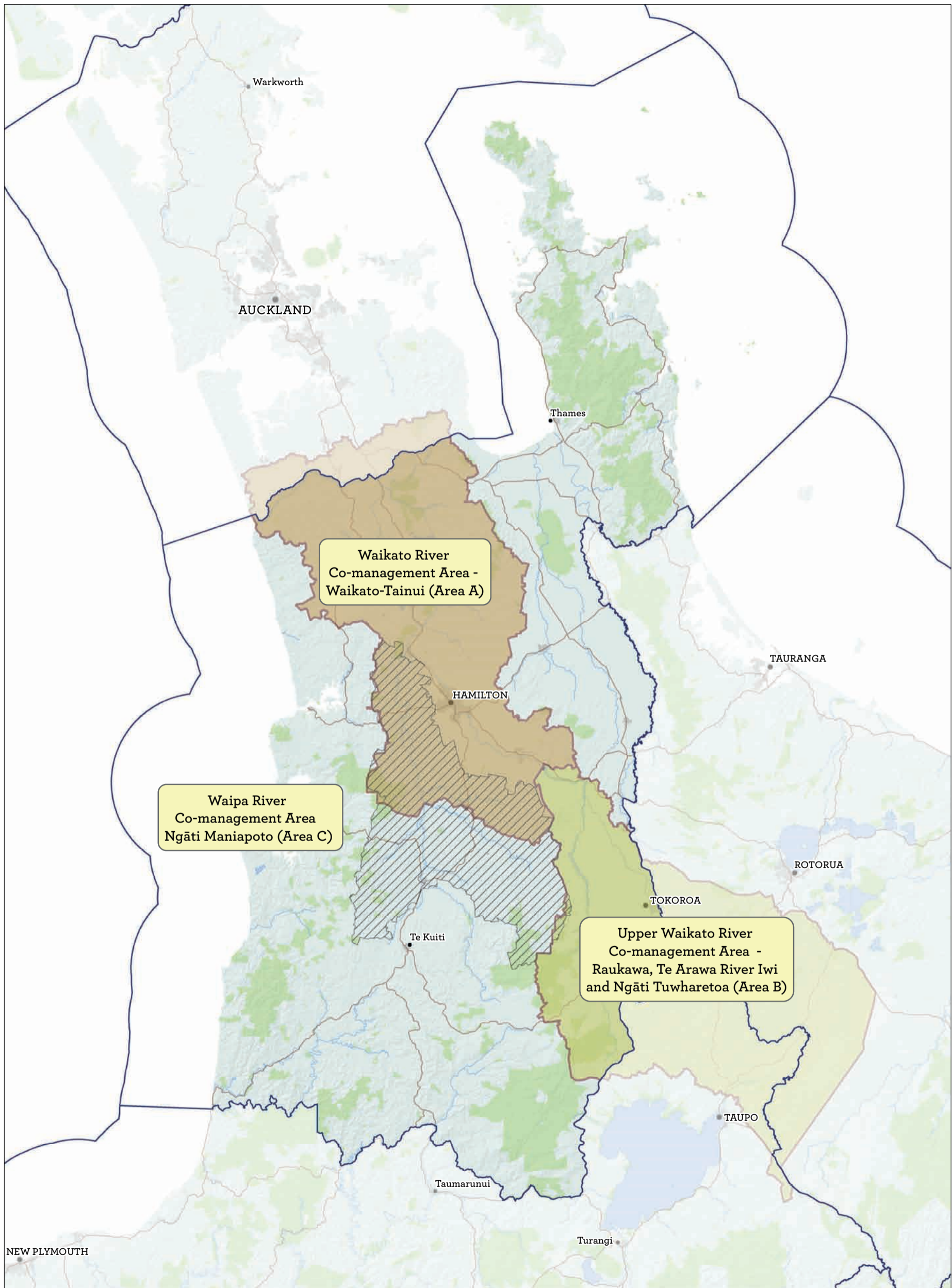


Map 4 Aircraft access zones overview
 Conservation Management Strategy
 Waikato



Map 5 Hauraki Gulf Marine Park and West Coast Marine Mammal Sanctuary

Conservation Management Strategy
Waikato

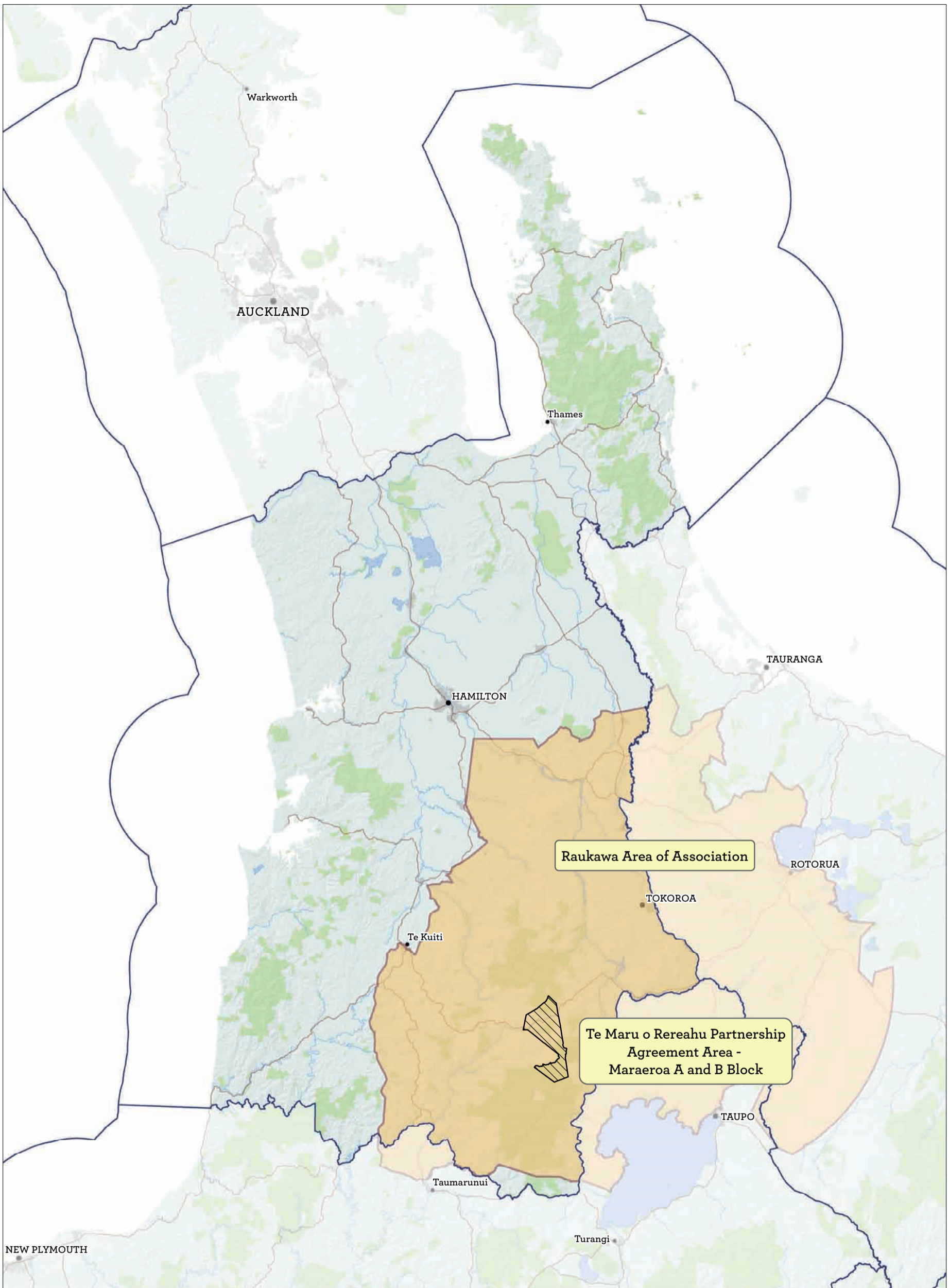


Map 6 Treaty Settlement: Waikato River and Waipa River Co-management Areas

Conservation Management Strategy
Waikato

0 5 10 20 30 40
Km





Map 7 Treaty Settlement: Raukawa and Te Maru o Rereahu Trust Settlement Areas

Conservation Management Strategy
Waikato

