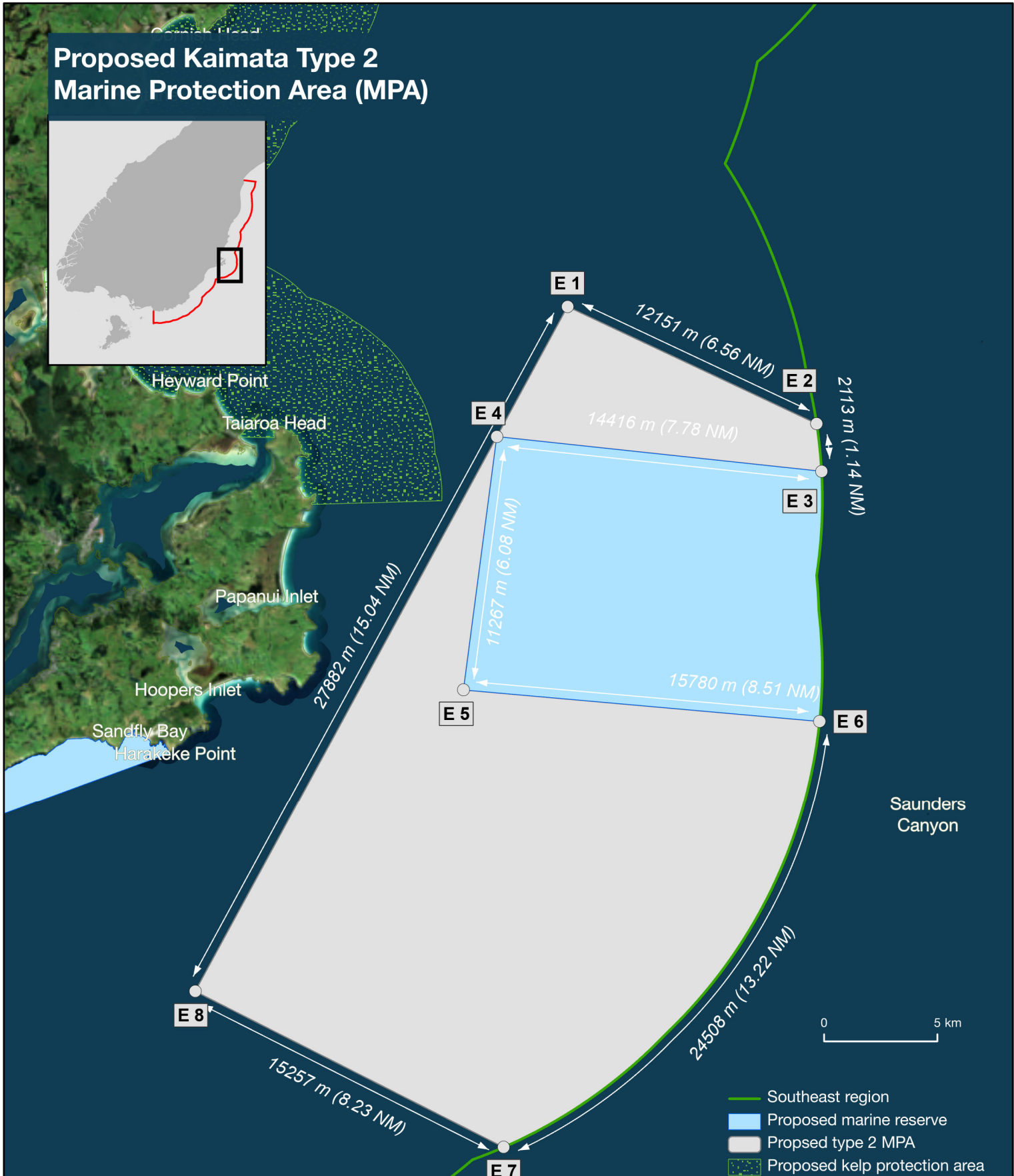
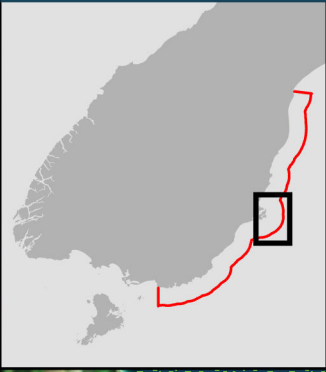


Proposed Kaimata Type 2 Marine Protection Area (MPA)



| Vertices | Longitude | Latitude |
|----------|----------------|---------------|
| E 1 | 170° 53.788' E | 45° 43.870' S |
| E 2 | 171° 2.166' E | 45° 46.809' S |
| E 3 | 171° 2.295' E | 45° 47.946' S |
| E 4 | 170° 51.266' E | 45° 46.921' S |
| E 5 | 170° 49.897' E | 45° 52.928' S |
| E 6 | 171° 2.017' E | 45° 53.898' S |
| E 7 | 170° 50.844' E | 46° 3.856' S |
| E 8 | 170° 40.444' E | 45° 59.938' S |



This map is produced as additional information and does not alter the June 2020 marine reserve applications