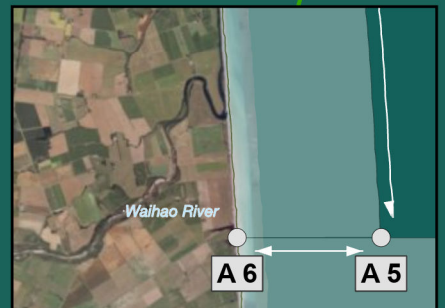
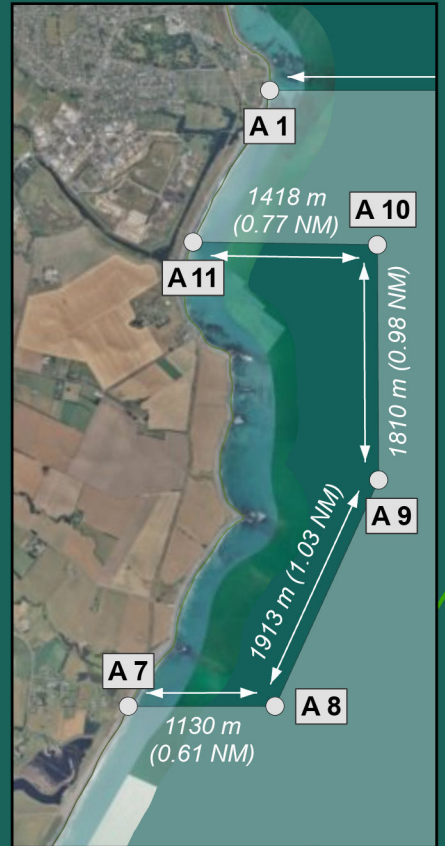
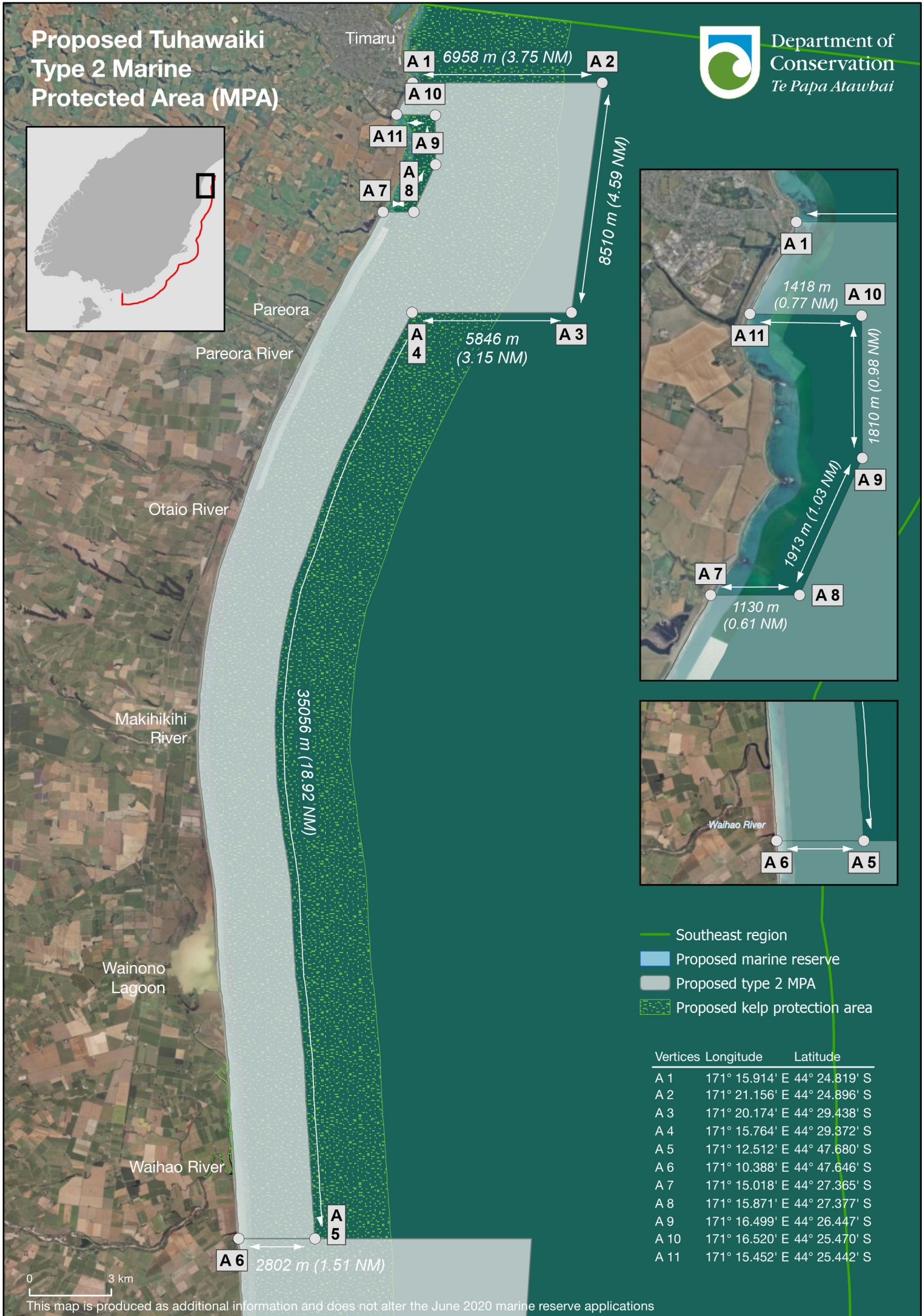
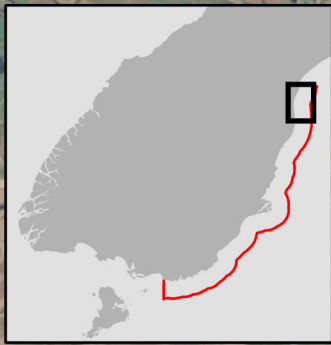


Proposed Tuhawaiki Type 2 Marine Protected Area (MPA)



Department of Conservation
Te Papa Atawhai



- Southeast region
- Proposed marine reserve
- Proposed type 2 MPA
- Proposed kelp protection area

Vertices	Longitude	Latitude
A 1	171° 15.914' E	44° 24.819' S
A 2	171° 21.156' E	44° 24.896' S
A 3	171° 20.174' E	44° 29.438' S
A 4	171° 15.764' E	44° 29.372' S
A 5	171° 12.512' E	44° 47.680' S
A 6	171° 10.388' E	44° 47.646' S
A 7	171° 15.018' E	44° 27.365' S
A 8	171° 15.871' E	44° 27.377' S
A 9	171° 16.499' E	44° 26.447' S
A 10	171° 16.520' E	44° 25.470' S
A 11	171° 15.452' E	44° 25.442' S

0 3 km

This map is produced as additional information and does not alter the June 2020 marine reserve applications