



# Northland Conservation Board

*Te Runanga Papa Atawhai O Te Taitokerau*

## Annual Report

### 1 July 2017 – 30 June 2018

Presented to the New Zealand Conservation Authority pursuant to Section 6 (O) of the Conservation Act 1987



**Photographs**

**Front Cover:** Board members using the wash station at Waipoua Forest. Photographer: Unknown

ISSN-1172-904X [print]

ISSN-1175-1797 [online]

**1. Published by**

Northland Conservation Board  
c/- Department of Conservation  
PO Box 147  
Whangarei 0140

# CONTENTS

1.	Chairperson’s report .....	4
2.	Introduction .....	6
3.	Conservation Board Region .....	8
	Conservation features of the Area .....	9
4.	Board Functioning.....	11
4.1.	Board Functions Under Section 6m of the Conservation Act 1987.....	11
4.2.	Powers of the Board under Section 6n of the Conservation Act 1987 .....	11
4.3.	Responsibilities under other Sections of the Conservation Act 1987 .....	11
4.4.	Board Functions under the National Parks Act 1980 .....	12
4.5.	Board Membership.....	122
4.6.	Members Profiles .....	133
4.7.	Board Meetings .....	166
4.8.	Attendance .....	177
4.9.	Board Committees and Representation.....	188
4.10.	Training for members.....	188
4.11.	Community and DOC Involvement in Board Meetings .....	188
4.12.	Field Trips and site inspections .....	199
4.13.	Special Events .....	211
4.14.	Community Activities supported by the Board .....	23
4.15.	Annual Work Plan.....	23
4.16.	Financial Report.....	23
4.17.	Health and Safety .....	21
5.	Statutory activity.....	24
5.1.	Conservation Management Strategy (CMS).....	22
5.2.	Management plans.....	22
6.	Advice and Advocacy .....	23
6.1.	Other Conservation Boards liaison.....	25
6.2.	New Zealand Conservation Authority liaison.....	255
6.3.	Department of Conservation advice .....	255
6.4.	Community advocacy and involvement .....	265
6.5.	Community visibility .....	265
6.6.	District and Regional Councils advocacy and advice .....	26
6.7.	Iwi liaison and advocacy .....	266
7.	Acknowledgements .....	26
8.	Appendix I –Annual Work Plan .....	27



## 1. Chairperson's report



As deputy chair of the Northland Conservation Board, I am pleased to introduce our 2017–2018 annual report.

We welcomed Tania McInnes to the Board as a new member and Luana Pirihi and myself were honoured to return as members to continue to share our historical knowledge and maintain our networks for another term in office. The Board bid farewell to Alan Martin and Bronwyn Bauer-Hunt who had been with us for some four years. Both members carried out their duties and responsibilities with great vigor and passion for Northland conservation. We wish them well Alan now resides in Palmerston North.

Nicole Anderson resigned from the Board in March this year to take up her new role as our Northland member on the New Zealand Conservation Authority. Adrienne Tari, who has been with the Board for three years, is our new Chair and we wish her well in leading the Board to tackle the many important issues that we face here in Northland. Board members have offered Adrienne their support and commitment to assist her with the tremendous task ahead.

The Northland Conservation Board acknowledges that Kauri dieback disease and myrtle rust outbreaks continue to be a challenge. Erosion and land management practices are adding huge stresses to our iconic Kaipara Harbour, with 700,000 tons of sediment per year smothering our kai moana beds, mutating the gills of snapper and wreaking havoc on their nursery and habitat, predators eating away our native forests and killing native species, tourism numbers impacting our dolphin population, water quality affecting our inanga and tuna species, and invasive weed spread to name a few. On a positive note, anecdotal evidence suggests kereru and kiwi numbers are slowly increasing and other bird life is being introduced to areas to support their survival and protection.

One of our main focuses has been to connect more closely to our communities' interests and issues at a regional and local scale through networking and support. It has been a delight for the Board to experience and be part of indigenous practices with Mana Whenua and support their efforts to mitigate Kauri dieback disease. Many members from communities throughout Northland congregated at Waipoua Forest, under strict guidelines, to witness and participate in a karakia/ blessing of our ngahere and for Tāne Mahuta when the disease was confirmed close by.



[Preparing for and supporting Te Roroa Iwi and Mana Whenua with karakia at Tāne Mahuta]

Site visits to special areas and witnessing the impact on the taonga highlighted in our Northland Conservation Management Strategy has been of huge value to the Board. It is so important that we interact with our communities, Mana Whenua, land care groups and the many other people who continually seek the Board's support to enhance what's important to them. We visited Lake Omapere to view algae bloom, dune lakes on the Pouto Peninsula to meet with kaitiaki and hear their concerns, kauri trees at Mt Manaia to see kauri dieback disease and the 'seven sisters' at Waipoua Forest to gain an understanding of their ngahere throughout the year.

On the hui side of things, we attended and supported the Auckland Conservation Board meetings to bring a holistic approach to matters of common interest and concern, such as the sinking of the ship Niagara and the real possibility of a massive oil spill that could affect our coast line and marine life. We also attended the Environment Defence Society conferences held in Auckland and meetings with the New Zealand Conservation Authority and New Zealand Conservation Board held in Wellington, allowing us to increase our networks throughout Aotearoa and share the highs and lows of conservation matters together.



Left to right: Hamish Eglinton, Statutory Manager, NNI; Adrienne Tari, Member; Nicole Anderson, Member; Luana Pirihi (Deputy); Alan Martin, Member; Merepaea Kendall, Footprints Waipoua Tour Guide; Willie Wright (Chair) and two Australian tourists at Waipoua Forest 22 March 2018. Photographer: Unknown.  
Luana Pirihi and Alan Martin members at Lake Omapere.

The Board now looks forward to the year 2018–2019 with passion and dedication to improve our flora and fauna and to build on the enormous effort Tai Tokerau communities are putting in to fight the ever-increasing attack on our environment and native species.

Kia ora

Willie Wright  
Deputy Chair  
Te Runanga Papa Atawhai O Te Taitokerau



## 2. Introduction

This is the 28th Northland Conservation Board Annual Report as required under Section 6 of the Conservation Act 1987.

The Northland Conservation Board had seven members for the 2017-2018 year appointed by the Minister of Conservation under the terms of the Conservation Act 1987. There were two re-appointments to the Board (Willie Wright and Luana Pirihi) and one new appointment (Tania McInnes). Willie Wright was elected as Chairperson for the majority of the year with Adrienne Tari taking the helm for the last few months.

Conservation boards are independent advisory bodies, established by statute. The Northland Conservation Board serves a conservation advisory role, along with offering community perspective on conservation management issues for the Northland region.

The Board has several statutory roles under various Acts including:

- The recommendation of a West Coast Conservation Management Strategy (CMS) to the New Zealand Conservation Authority (NZCA) for approval
- Advising the Department of Conservation and the NZCA on how conservation management strategies and plans will be put into practice
- Reporting on the implementation of the CMS
- The approval of conservation management plans
- Advising the Department of Conservation and NZCA on conservation matters, and proposed changes to status of land of national and international significance
- Liaising with Fish and Game Council on conservation matters

Carrying out other powers delegated by the Minister of Conservation, the Conservation Act or any other Act.

Section 6(O) of the Conservation Act requires conservation boards to provide the NZCA with an annual report as soon as practical after 30 June each year. In recognition of this requirement, the Northland Conservation Board submits this annual report.

The Northland Conservation Board is appointed by the Minister of Conservation under section 6(P) of the Conservation Act 1987. Board functions are outlined in section 6(M) and the powers, which enable the Board to carry out those functions, are under 6(N) of the Act.





### 3. Conservation Board region

The Northland Conservation Board's area of jurisdiction covers all public conservation lands, waters and resources in Northland. The area also extends out to the 12-nautical mile limit with respect to coastal and marine issues, and out to the 200-nautical mile limit with respect to protected species.

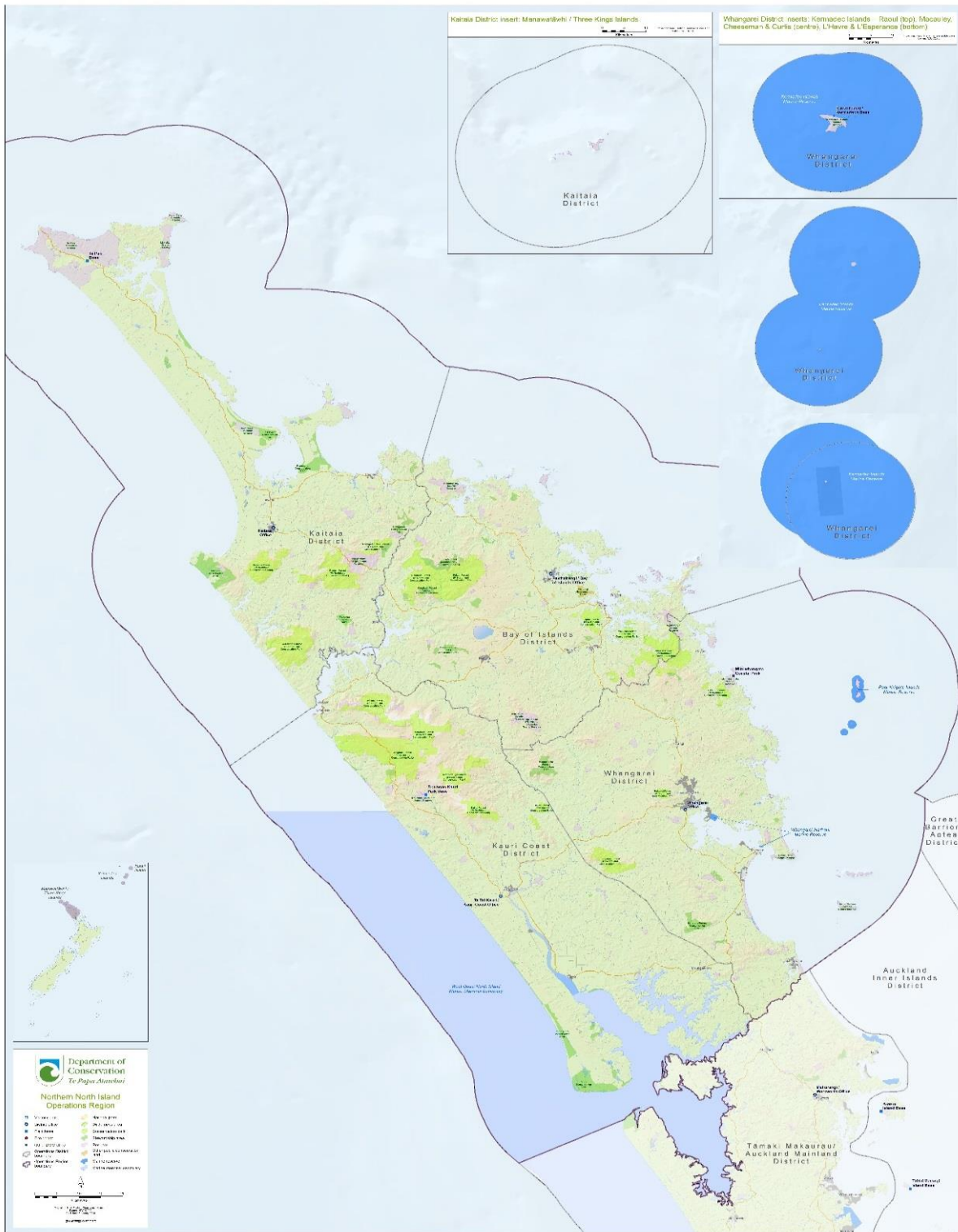


Figure I. Northland Conservation Board jurisdiction. Note: The Kermadec Islands are not included in the Board's jurisdiction.

Northland's terrestrial area covers approximately 1 254 826 ha, with around 13.4% of this area (167 918 ha) designated as public conservation land. The Northland Protected Natural Area Programme (PNAP) has identified around 21.7% (272 176 ha) of important natural areas on the mainland, with 47% (129 057 ha) of these areas occurring on public conservation land. The issues which are of particular interest to the Board include: e.g.

- Ecosystem management and management of plant and animal species
- Management of recreational facilities
- Management of historic sites
- Concession activities, including those relating to recreation and tourism activities, grazing, industrial use, filming and gravel extraction
- Mining and access arrangements
- Marine protection
- Biosecurity issues

### **Conservation features of the region**

The main features of the public conservation land and waters within the Board's boundaries are:

- The 16 harbours, numerous bays, inlets and islands on the 3,000 km long coastline are a primary attraction for residents and visitors to the region
- Northland contains the largest area of relatively unmodified sand hills and dunelands (Pouto Peninsula), the largest mānawa/mangrove (*Avicennia marina*) forest (Rangaunu Harbour) and one of the most biologically rich harbours (Parengarenga Harbour) in New Zealand
- Kaipara Harbour is a dominant and unifying feature, as its catchment drains almost the entire southern half of the region as well as linking with the adjacent Auckland region
- Waipoua Forest
- Dunelands and wetlands on Pouto Peninsula
- A high number of threatened and at-risk endemic invertebrates, including land snails and insects, often with locally restricted distributions
- Home to over half of New Zealand's vascular plant species – of the 804 species only found in New Zealand, 152 species only occur in Northland
- Predator free islands
- Diverse and unique freshwater and marine habitats
- The birthplace of the nation (Waitangi)

## **4. Board functions**

### **4.1. Board functions under Section 6m of the Conservation Act 1987**

The functions of the Board are:

- 1) To recommend the approval by the Conservation Authority of conservation management strategies, and the review and amendment of such strategies, under the relevant enactments
- 2) To approve conservation management plans, and the review and amendment of such plans, under the relevant enactments
- 3) To advise the Conservation Authority and the Director-General on the implementation of conservation management strategies and conservation management plans for the area within the jurisdiction of the Board
- 4) To advise the Conservation Authority or the Director-General on:
  - a. Any proposed change of status or classification of any area of national or international importance; and on
  - b. Any other conservation matter relating to any area with the jurisdiction of the Board
- 5) To liaise with any Fish and Game Council on matters within the jurisdiction of the Board
- 6) To exercise such powers and functions as may be delegated to it by the Minister under this Act or any other Act

### **4.2. Powers of the Board under Section 6n of the Conservation Act 1987**

- 1) Every Board shall have all such powers as are reasonably necessary or expedient to enable it to carry out its functions
- 2) Without limiting the generality of subsection (1), each Board may –
  - a) Advocate its interests at any public forum or in any statutory planning process; and
  - b) Appoint committees of members and other suitable persons, and delegate to them functions and powers.
- 3) The power conferred by subsection (2)(a) shall include the right to appear before courts and tribunals in New Zealand and be heard on matters affecting or relating to the Board's functions

### **4.3. Responsibilities under other sections of the Conservation Act 1987**

Nil

#### 4.4. Board Functions under the National Parks Act 1980

There are no national parks within the Board's region.

#### 4.5. Board Membership

There were 7 Board members for the reporting year, appointed by the Minister of Conservation.

Willie Wright and Luana Pirihi's terms of office expired on 30 June 2017. Both members were re-nominated for a further 3-year term.



Chair and Deputy Chair - Willie Wright was re-elected Chairperson for most of the year and Nicole Anderson took the helm for the remainder of the year. Luana Pirihi was elected Deputy Chairperson for the first half of the year and Willie Wright accepted the role of Deputy Chairperson for the remaining half of the year.




The following table lists the membership of Northland Conservation Board between 1 July 2017 and 30 June 2018 and their term of office:


Board member	Area	Term start	Term end	Term served
Willie Wright	Kaipara	1 July 2017	30 June 2020	2
Luana Pirihi	Whangarei	1 July 2017	30 June 2020	2
Alan Martin	Whangarei	1 July 2015	30 June 2018	2
Bronwyn Hunt	Kaitaia	1 July 2015	30 June 2018	1
Nicole Anderson	Kerikeri	01 July 2016	31 June 2019	1
Adrienne Tari	Russell	1 July 2015	30 June 2018	1
Tania McInnes	Kerikeri	01 July 2017	31 June 2019	1

Table I: Board membership


#### 4.6. Members profiles

<p>Willie Wright Chairperson</p>	<p>Mr Wright is the Programme Manager for the Integrated Kaipara Harbour Management Group, a board member on the Co-Governance committee – Pou Tu Te Rangi/Harding Park, Dargaville, a member on the Ngunguru catchment committee, a negotiator for the Treaty settlement of the Kaipara Moana for Te Iwi O Ngati Whatua.</p> <p>He has vast knowledge and experience in the Treaty of Waitangi process and Treaty settlements. He has extensive iwi and cultural awareness skills, as well as governance and directorship skills having been a board member for many trusts and local community groups. He has a passion for ecosystem and co-management-based approach with a strong focus on community and Mana Whenua led initiatives.</p> <p>His interests include fishing/movies and spending time with whanau.</p> <p>He is of Ngati Whatua/Ngati Porou and Scottish descent.</p>	
<p>Luana Pirihi Deputy Chair</p>	<p>Involved with many community environmental protection groups and trusts. Strong connections to local iwi. Iwi affiliations: Patuharakeke, Ngati Whatua, Ngāpuhi, Ngatiwai</p>	

<p>Alan Martin</p>	<p>Retired Chartered Accountant and keen conservationist. Foundation Chair and former Trustee of the Pukenui Western Hills Forest Charitable Trust and current Trustee and Treasurer Whangarei Quarry Gardens Trust. Past President and Life Member Northland Chamber of Commerce. Past Chair NZ Automobile Assn Northland District Council. Trustee of Te Hau Awhiowhio o Otangarei Trust and Chairman of Directors of Otangarei Papakainga Limited. President Whangarei Club Inc and Master of Parahaki Masonic Lodge.</p>	
<p>Adrienne Tari</p>	<p>Ms Tari is involved with a number of community groups in the Mid Northland area. She also has strong connections to local hapu. Her hapu connections include Ngāti Rangī, Te Uri Taniwha and Ngāti Hineira. Her outdoor interests include mountain biking and spending time with whanau.</p>	
<p>Bronwyn Bauer-Hunt</p>	<p>Bronwyn brings a strong background in policy and planning, strategy and advice which includes advocacy and knowledge of the Resource Management Act. Iwi affiliations: Te Rarawa, Ngāpuhi, Te Roroa, and Ngati Whatua</p>	

<p>Nicole Anderson</p>	<p>Nicole Anderson (DipAcc, DipBus, DipMgt, PGDPH) is based in the Mid North with a background in accountancy, health, community and business development.</p> <p>Descending from the hapū of Te Hikutu in the south Hokianga, she has worked primarily with organisations advancing Māori and Iwi, and with various public sector and private organisations, focusing on policy and commercial development.</p> <p>A chartered member of the Institute of Directors (CMIInstD), Nicole has been a member of various public and private sector governance bodies, including a member of the AUT University Council and Chair of the Council's Maori Education Working Group, a Trustee of Hauora Hokianga Enterprise Trust, which governs the Rawene Hospital and associated health services, the Auckland Human Health &amp; Disability Ethics Committee (Chair) and the NRC Environment Committee.</p> <p>Nicole currently sits on the Northland Conservation Board, is a Trustee of Matai Aranui Marae and a Director of PHARMAC (Pharmaceutical Management Agency).</p> <p>Apart from her involvement in various whānau, hapū, Iwi and Māori organisations, she was the previous interim Project Manager for Tūhoronuku Independent Mandated Authority, the Ngāpuhi settlement entity.</p>	
------------------------	--	--



	<p>Nicole and her husband Mark are business owners in Kaikohe and Auckland and farm in the mid-north area.</p> <p>Ko Ngāpuhi tōna iwi, nō Hokianga ia. Ka noho ia ki Kerikeri ki te taha o tōna whānau.</p>	
<p>Tania McInnes</p>	<p>Moving to Kororareka/Russell with her family at the age of four, Tania grew up surrounded by an unspoiled environment, loving the many aspects that come with a 'almost' rural upbringing. She quotes "there are huge benefits to a lush and flourishing environment, including being a wonderful place to live. We need to absolutely ensure we look after this place we call home." Tania (also the Deputy Mayor of the Far North District) is committed to supporting the district vision - He Whenua Rangatira - A district of sustainable well-being and prosperity.  <a href="http://taniamcinnnes.kiwi.nz">taniamcinnnes.kiwi.nz</a></p>	

#### 4.7. Board meetings

The Northland Conservation Board held four formal meetings and four working meetings during the reporting period. Venues for the Board meetings are varied each year to ensure a wide coverage and enable members of the public to attend.

Board meeting date	Meeting location and venue
14 July 2017	(Working meeting + induction)
25 August 2017	Department of Conservation office, Whangarei
8 September 2017	(Working Meeting)

<b>24 November 2017</b>	Department of Conservation office, Whangarei
<b>23 February 2018</b>	(Working Meeting)
<b>23 March 2018</b>	Opononi Hotel, Hokianga
<b>25 May 2018</b>	(Working Meeting)
<b>22 June 2018</b>	Waitangi National Trust Grounds, Paihia

Table II Board meeting dates and location

#### 4.8. Attendance

The table below summarises the number of Board meetings attended by members out of the total number of meetings held during the year.

Members attended other meetings and events in their role as Board members, including representative roles.

<b>Board Member</b>	<b>Formal meetings</b>	<b>Working meetings</b>
<b>Willie Wright</b>	4/4	4/4
<b>Luana Pirihi</b>	4/4	4/4
<b>Bronwyn Bauer-Hunt</b>	1/4	2/4
<b>Alan Martin</b>	3/4	4/4
<b>Nicole Anderson</b>	4/4	3/4
<b>Tania McInnes</b>	3/4	2/4
<b>Adrienne Tari</b>	2/4	2/4

Table III: Member attendance



Board and guests at 23 March 2017 meeting at Opononi Hotel, Hokianga. Left to right: Nicole Anderson, Member; Tania McInnes, Member; Robyn Stubbing, Minute taker; Willie Wright, Chair; Alan Martin, Member; Luana Pirihi, Deputy Chair; Adrienne Tari, Member.

#### 4.9. Board committees and representation

Membership of Board committees was reviewed in July, at the beginning of the Board year. No subcommittees were appointed.

#### 4.10. Training for members

The Board undertook an induction workshop for new members in July 2017 which provided background information on the region, the role of conservation boards and local issues.

Luana Pirihi and Alan Martin attended the EDS conference ‘Tipping Points’ on behalf of the Board on 9–10 August. The emphasis of the conference was on water quality.

In addition to the regular updates on the Department of Conservation’s activities provided in the status report which is considered at each meeting, the Board received additional briefings and updates. Topics covered this year were:

- Wreck of the Niagara
- Updates from the Te Hiku Conservation Board
- Permissions and statutory land management processes and improvements
- Kauri dieback updates including proposed track closures
- Collaborative landscapes
- Roads of significance
- Northland Regional Council’s Long-term Plan
- The continuing spread of Myrtle Rust on mainland New Zealand following the first discovery in Kerikeri in mid 2016
- CMS review process
- Pilot programme updates
- Marine protection and management including Hector’s and Maui Dolphin Threat Management Plan Review
- Predator and weed free launch

The Department of Conservation also provided an update on conservation activities within the local area at each meeting location.

#### 4.11. Community involvement in Board meetings

Public forums are offered at each Board meeting for members of the community to raise conservation issues with the Board.

Public attendee	Date	Issue
Bill Rawiri. Whirinaki Toiora Trust	23 March 2018	Briefed the Board on current work of the Trust

Alan Hessel, Chair, Nga Ngaru o Hokianga Takiwa	23 March 2018	Briefing to the Board on current projects such as cycleways, predator control and weed control
Jo Floyd, Judy Mitchell, Kerry Francis of Brooks Area Community Inc.	24 November 2017	A community group concerned about the proposed Brynderwyn bypass and the potential effects on conservation land
Bream bay Coastal Care Trust – Robyn Hembry	25 August 2017	Five members of the Trust spoke to the Board about concerns they have for the Ruakaka Wildlife Refuge – issues included mangrove removal and development pressures

#### 4.12. Field trips and site inspections

The Board aims to have at least two site visits each financial year. Site visits serve multiple goals including public exposure and supporting community groups that are doing work related to the CMS milestones.

#### Footprints Waipoua 22 March 2018



*Wash station at the start of the Yaka's Track*



On Thursday 22 March members of the Board went on a four-hour evening drive and walk through the Waipoua Forest on the Kauri Coast. The walk was relevant to our major project of trying to stop the spread of Kauri dieback disease and we were impressed by the upgraded boot washing stations and the information available to visitors about the disease.

We were guided by a local Maori schoolteacher who stressed the spiritual significance of the forest. We were introduced to the Seven Sisters, Tāne Mahuta and to the grandfather of the forest, 2,000-year-old Matua Ngahere which is 17.7 meters high and has a girth of 13.8 metres. The tracks were well maintained, and we would recommend this experience to both to New Zealand residents and overseas visitors. *Alan Martin*



On Thursday night, Northland Conservation Board members travelled to Waipoua Forest to do the twilight ‘Footprints’ tour of the forests majestic Kauri trees. Our guide, Merepaea was incredibly knowledgeable about the forest, our culture and the disease that is slowly killing our kauri trees – kauri dieback.

It was promising to see the improved wash stations at both the Tāne Mahuta and Te Matua Ngāhere sites. The kauri dieback website ([www.kauridieback.co.nz](http://www.kauridieback.co.nz)) has resources that can be shared and information about dieback, including what each of us can do to help save our Kauri. The tour took over three hours and we highly recommend encouraging visitors and locals to take the tour of the forest with Merepaea – or to visit one of the well signposted walks throughout the Waipoua Forest. *Willie Wright*



Wash station at the Yaka's Track



Young kauri just off the track



Members observing kauri from the boardwalk

## Ruakaka Dune lake

On March 21 Board members Luana Pirihi and Alan Martin visited the Ruakaka Dune lake to check on water levels of the lake. This site visit was undertaken following a letter of complaint submitted to the Board from Margaret Hicks of Ruakaka.



*All hands on deck*



*Students busy planting*



*View of Ruakaka Dune lake*



*Boundary between Dune lake & subdivision*

## Lake Omapere



On 22 March the Board visited Lake Omapere to observe an algal bloom that had reportedly turned the lake green. Very little of the reported bloom was observed. This was possibly due to cooling temperatures and recent rainfall.

### 4.13. Special events

- The following are some of the special events attended by Board members:

Event	Purpose
-------	---------



Conservation Board Chairs meeting in Wellington	To meet with Board Chairs from across the country and receive briefings from NZCA and the Minister
EDS Tipping Points Conference	Education
Auckland Conservation Board meetings	Strengthening the ties between Auckland and Northland conservation Boards.
ACB meeting	Received presentation from Clive Sharp, Mike Lee and others on the wreck of the Niagara
Predator Free launch at Aroha Island	Willie Wright & Alan Martin flew the flag for NCB at the event launched by Minister Barry
Bream Head Conservation Trust	Signing of the MoU between BHCT and Auckland University (Whangarei)
Taporapora Landcare day	Wahi tapu/urupa/water quality restoration
Pukenui Trust	Kiwi relocation event attended by Luana Pirihi



*Pukenui Trust – public eagerly awaiting arrival of kiwi*



*Public get to look at the kiwi*



#### 4.14. Community activities supported by the Board

Board members attend various community groups and organisations to show their support for a variety of activities.

Event	Purpose
Save Poroti Springs march	Alan Martin and Luana Pirihi showed their support for this local initiative
Whangarei Harbour Marine Reserve Committee	Attended by Luana Pirihi as the Board's representative on the committee
DOC Community Fund	Alan Martin represented and made recommendations on behalf of the Board
Ngunguru Catchment	Report on water quality, sedimentation, biodiversity at site
Integrated Kaipara Harbour Management	Support for Kaipara Harbour ecosystem catchment-based work
Fish & Game Council	Alan Martin represented the Board at every meeting of the Council
Bream Bay Coastal Care Trust planting day	Luana Pirihi helped plant 1500 spinifex plants at Ruakaka

#### 4.15. Annual Work Plan

Please refer to Appendix 1 for the full Board Annual Work Programme.

#### 4.16. Financial report

Northland Conservation Board Costs 2017-18 12 months report	Jun-18	Year to Date	Jun-18	Jun-18
	YTD	Jun-18	YTD	Jun-18
Expense	Costs	Budget	Variance	Full Year Budget
Board fees	10,167	15,000	4,833	15,000
Media Communications	4,950	5,000	50	5,000
Office Costs	1,538	1,000	(538)	1,000
Travel	1,478	3,000	1,522	3,000
Printing	568	1,000	432	1,000

<b>Hospitality</b>	<b>2,466</b>	<b>1,000</b>	<b>(1,466)</b>	<b>1,000</b>
<b>Education</b>	<b>2,074</b>	<b>1,000</b>	<b>(1,074)</b>	<b>1,000</b>
<b>Total</b>	<b>23,241</b>	<b>27,000</b>	<b>3,759</b>	<b>27,000</b>

#### 4.17. Health and safety

Health and safety is taken seriously by the Board and is the first order of business at any meeting and site visit. No health and safety incidents were reported by the Board in this financial year.

### 5. Statutory activity

The Board either made submissions or supported the following statutory activities:

- Refining NZ – Dredging Whangarei Harbour; supporting the mana whenua position.
- National Environmental Standard for Plantation Forestry (NES-PF) – the Board supported a clause enabling Council’s to charge to monitor permitted activities.

#### 5.1. Conservation Management Strategy (CMS)

The Board continued to monitor the milestones in the Northland CMS. This year rather than looking at all of the milestones, the Board decided to concentrate on those that are due for completion in 2017 and beyond.

A partial review of the CMS is likely to be undertaken in conjunction with the development of the draft Te Hiku o Te Ika CMS.

#### 5.2. Management plans

No conservation management plans reviewed by the Board in this financial year.

### 6. Advice and advocacy

All Board members have responsibility for liaising with other groups when opportunities arise, and some members have specific roles in liaison.

The Board appointed various members to liaise with other groups and agencies.

<b>Liaison person</b>	<b>Group, agency or organisation</b>
<b>Alan Martin</b>	Fish & Game Council
	Quarry Gardens, Whangarei
	Pukenui Western Hills Forest Charitable Trust

	Friends of Matakoke Limestone Island
	Whangarei native Forest and Bird Protection Society
	Chamber of commerce
<b>Willie Wright</b>	Integrated Kaipara Harbour Management Group
	Ngunguru Catchment Care
	Auckland Conservation Board
<b>Luana Pirihi</b>	Auckland Conservation Board
	Bream Bay Coastal Care Trust
	Ruakaka Ratepayers Association
	Whangarei Harbour Marine Reserve Advisory Committee
<b>Nicole Anderson</b>	Nga Ngaru o Hokianga Takiwa
	Kaikohe Business Association
	Kaikohe Economic Development Working Group
	Matai Aranui Marae
	Pou Herenga Tai Cycletrail Trust
<b>Bronwyn Bauer-Hunt</b>	Te Hiku Conservation Board
<b>Adrienne Tari</b>	Ngati Rangi Ahu Whenua Trust St Michael's Church (Ngawha) Northland Regional Corrections Facility (community liaison) Kaikohe Economic Development Working Party

Table IV: Liaison persons

### 6.1. Other Conservation Boards liaison

- The Board has continued to strengthen its relationship with the Auckland Conservation Board and is looking to work together on certain aspects of conservation.
- The Board was pleased to hear regular updates on the development of the Te Hiku Conservation Board from Te Hiku Community Board member, Chris Jenkins. An invite has now been extended to the Northland Board from the Te Hiku Board for a NCB appointed member to attend Te Hiku meetings.

### 6.2. New Zealand Conservation Authority liaison

- NZCA Liaison, Mita Harris did not attend any meetings and resigned from NZCA in early December 2017.

### 6.3. Department of Conservation advice

The Board provided advice to the Department on the following issues:

- The Ruakaka Dune lake
- DOC Community fund applications
- Chair, Willie Wright visited each DOC office in NCB rohe (area) and met with the operations manager to discuss priority work streams within each area's jurisdiction.

## 6.4. Community advocacy and involvement

The Board believes that working with conservation organisations and members of the public is very important. Meetings were held in different parts of the Northland region and opportunities for the public to attend Board meetings were advertised.

Members of the public attended the public forum at several of the year's meetings and a range of issues were raised. The Board appreciated their input and efforts made to attend the meetings and responded by letter to questions asked or concerns raised.

Public forum issues raised were:

- See 4.11 above

## 6.5. Community visibility

The Board maintains a presence on the Department of Conservation's website. Information on being on a Conservation Board was also developed and advertised/displayed at <http://www.doc.govt.nz/about-us/statutory-and-advisory-bodies/conservation-boards/northland/>

## 6.6. District and Regional Councils advocacy and advice

The Board appreciates the opportunities to meet with representatives of the four local Councils.

During the year, the Board heard from:

- Northland Regional Council Members Justin Blackie, Rick Stolwerk & Penny Smart
- Far North District Council

## 6.7. Iwi liaison and advocacy

The Board received iwi advice from a multitude of sources on a consistent basis.

# 7. Acknowledgements

The Northland Conservation Board members have put in an enormous amount of time and effort into raising the profile of the Board and key conservation concerns in 2017/18.

Individual members in their respective locations have proactively sought out opportunities to liaise with as wide a section of the community as possible and engage in meaningful discussion at all levels.

The Board bids a fond farewell to Alan Martin and Bronwyn Bauer-Hunt. Their contributions have been greatly appreciated and their presence will be greatly missed. Nicole Anderson also resigned from the Board at the end of this year. Her presence as a Board member and Chair will be greatly

missed, but it's not farewell as Nicole will still attend meetings as the NZCA Northland Liaison. We look forward to Nicole's continued input into meetings.

Each Board member can be proud of the work they have undertaken this year over and above what is expected of them and as outlined in the Board's response to the *Letter of expectation*.

A key factor in the success of the Board has been the inspirational and tireless leadership of the Chair, Willie Wright. The Board pays special acknowledgement to Willie and recognises the commitment made whilst juggling many other commitments. The Board also wishes to acknowledge Nicole Anderson who accepted the role of Chair but was required to resign her position almost immediately due to her acceptance of a role on the NZCA.

The role model that the Chair has provided has energised the individual Board members and, as a result, the Board has been seen throughout Taitokerau/Northland as a key player in conservation and environmental issues. There is still a lot of work to do to ensure that the Board's very existence is known and understood but with the development of new forms of communication such as social media, the Board looks forward to a growing public profile.

The success of the Board can also be attributed to the fellowship and camaraderie that continues to develop in the current membership. This has a significant impact on the ability of members to work together effectively throughout the region.

Finally, the Board would like to acknowledge the following people for their support, advice and friendship in 2017/18:

- Robyn Stubbing, Minute taker
- Mita Harris, NZCA
- Alec Hawke and Glen Wilcox, Auckland Conservation Board
- Louise Wilson, Policy Planner, FNDC
- Rick Stolwerk, NRC Councillor
- Penny Smart, NRC Councillor
- Justin Blackie, NRC Councillor
- Chris Jenkins, Te Hiku o Te Ika Conservation Board
- Department of Conservation operations managers and staff
- The late Robbie Sarich

## 8. Appendix I –Annual Work Plan

### **Northland Conservation Board Work Programme 1 July 2017 – 30 June 2018**

#### **Work Programme Overview**

This Northland Conservation Board work programme has been developed in response to the Letter of Expectation from the Associate Minister of Conservation dated 17 August 2016. It is structured in three parts, namely:

- Part A: Planned Board activities aimed at meeting the regional Work Programme contained in the letter:
  - Review/development/monitoring of statutory management plans including Conservation Management Strategies (CMS);
  - Advice relating to stewardship land;
  - Other statutory functions for the Board;
  - Advocacy.
  
- Part B: Planned Board activities aimed at general expectations contained in the letter:
  - working with the Department;
  - taking account of the Ministerial priorities for the Department as contained in the Department's Stretch Goals;
  - working with adjoining Boards and the NZCA;
  - understanding the Board's contribution to giving effect to the principles of the Treaty of Waitangi;
  - general engagement with the community, including raising the profile of the Board.
  
- Part C: risks/issues from the Board's perspective, and opportunities for conservation growth that are not covered above.

## PART A: REGIONAL WORK PROGRAMME

### 1 Review / development of statutory management plans including Conservation Management Strategies (CMS)

#### 1.1 Board Objective:

***In conjunction with the Department the Board will determine priorities for implementation of the approved Northland CMS in accordance with the National Implementation Monitoring Guidelines.***

#### Planned Board Activities, Success Measures and Key Milestones

A	CMS monitoring “traffic light” presented to Board members as mandatory process at Board meetings by Department of Conservation
B	Regional areas of Board members will monitor CMS objectives/implementation of projects by Department of Conservation

#### 1.2 Board Objective:

***In conjunction with the Department the Board will determine priorities for implementation of the approved Northland CMS.***

#### Planned Board Activities, Success Measures and Key Milestones

A	Chair/Dep. Chair to hold regular meetings with Department of Conservation Director of Operations to prioritise projects within the CMS
B	Chair / Dep. Chair engage with Department of Conservation regional managers to prioritise and monitor progress of CMS within regional areas
C	Report on engagement with Department of Conservation Director of Operations/regional managers on a regular basis

### 2 Stewardship Land

#### 2.1 Board Objective:

***The Board will provide the Minister and Department with advice on priorities for reclassification of stewardship areas that require increased protection because of their significant conservation values***

#### Planned Board Activities, Success Measures and Key Milestones

A	Monitor the Department of Conservation engagement and consultation with Treaty Settlement’s Post Governance entities
B	Advise the Department of Conservation/Minister of any issue that would require increased conservation protection ( <i>and cultural protection</i> ) of stewardship areas
C	Ensure Treaty Settlements in Tai Tokerau are finalised before any Stewardship areas within settlement rohe is reclassified



### 3 **Other statutory functions**<sup>1</sup>

#### 3.1 **Board Objective:**

***The Board will nurture ongoing working relationships with Fish and Game Council regarding issues of mutual interest within the region***

#### **Planned Board Activities, Success Measures and Key Milestones**

<b>A</b>	Maintain ongoing and regular engagement with Fish and Game Council
<b>B</b>	Report on engagement and areas of mutual interest or concern the Board may have with Fish and Game Council

#### 3.2 **Board Objective:**

***The Board will advise on proposed changes of status for nationally and internationally important areas, when sought by the Department***

#### **Planned Board Activities, Success Measures and Key Milestones**

<b>A</b>	Advise on any change of status for nationally and internationally important areas and give advice to the Department as and when required
<b>B</b>	The Board will advise the Department of any concern or interest when establishing <i>Change of Status</i> with Iwi/hapu or communities

### 4 **Advocacy**

#### 4.1 **Board Objective**

***The Board will pursue all reasonable opportunities to advocate at public forums and in any statutory planning processes.***

#### **Planned Board Activities, Success Measures and Key Milestones**

<b>A</b>	The Board will continue to advocate its interest at any public forum or in any statutory planning processes
<b>B</b>	The Board will proactively promote and advocate its position on 'war on weeds', save the 'kukupā' campaign, pest management and 'Healthy forests' in Northland

#### 4.2 **Board Objective**

#### **Planned Board Activities, Success Measures and Key Milestones**

<b>A</b>	The Board will continue to support Regional/District Councils precautionary approach to GMO
<b>B</b>	The Board will monitor statutory planning process and advice/make submissions where appropriate

---

<sup>1</sup>This section should include Board functions relating to statutory functions under section 6M of the Conservation Act

## PART B: GENERAL EXPECTATIONS

### 5 Working with the Department

**Board Objective:**

*Board members will maintain good working relationships and open dialogue with Directors, Managers and Board Support Officers in order to engage strategically in conservation for the region.*

#### Planned Board Activities, Success Measures and Key Milestones

A	Board members will actively engage and enhance working relationships with their regional office managers and staff
B	Chair /Dep. Chair will continue to enhance relationships with Department Operations Director, Area managers, statutory managers and staff

### 6 Taking account of Ministerial priorities for the Department<sup>2</sup>

**Board Objective:**

*The Board will identify opportunities to support North Island community conservation targeting kiwi.*

#### Planned Board Activities, Success Measures and Key Milestones

A	Board members will continue to engage & advocate for Kiwi habitat & translocation
B	Board will promote healthy forests and advocate for increased resourcing to ensure the survival of our forests
C	Promotion of all Kiwi coast programmes in Northland

**Board Objective:**

*The Board will identify opportunities for building relationships to support the Healthy Parks / Healthy People programme.*

#### Planned Board Activities, Success Measures and Key Milestones

A	Board promotes forests and open spaces to all community and encourages public involvement and ownership through all Board communication channels
B	Board will promote & educate the community regards the disposal of waste in our environments

### 7 Working with adjoining Boards and the NZCA

**Board Objective:**

*Board members will liaise with neighbouring conservation boards in order to progress cross boundary CMS issues and other matters of mutual interest.*

---

<sup>2</sup> This section could include where Boards are consulted on pest control operations

### **Planned Board Activities, Success Measures and Key Milestones**

<b>A</b>	The Board will continue to liaise and participate with Auckland Conservation Board
<b>B</b>	The Board will establish a relationship with Te Hiku o Te Ika Conservation Board
<b>C</b>	The Board will continue to encourage Auckland and Te Hiku o Te Ika members to attend our Board meetings
<b>D</b>	The Board will continue its ongoing relationship with NZCA

### **8 Understanding the Board's contribution to giving effect to the principles of the Treaty of Waitangi**

#### **Board Objective:**

*The Board will understand and support the Board's and Department's obligations under Treaty settlements as well as principles under section 4 of the Conservation Act.*

### **Planned Board Activities, Success Measures and Key Milestones**

<b>A</b>	The Board recognises and acknowledges the Treaty principles
----------	---

### **9 Engaging with the community, including raising the profile of the Board**

#### **Board Objective**

*Board members will liaise regularly with other conservation entities, such as district and regional councils, NGOs and community groups, in order to enhance the profile of the Board and pursue good working relationships on issues of mutual interest and concern.*

### **Planned Board Activities, Success Measures and Key Milestones**

<b>A</b>	The Board will continue and enhance its relationship with district and regional councils, NGOs and community groups
----------	---

#### **Board Objective:**

*Board members will take the initiative to meet with community groups and the general public to gauge community reaction to conservation initiatives planned or implemented by DOC.*

### **Planned Board Activities, Success Measures and Key Milestones**

<b>A</b>	The Board will continue to support & promote community events
----------	---

## **PART C: RISKS AND OPPORTUNITIES**

### **10 Risks from the Board's perspective**

<b>A</b>	Lack of resourcing to fulfil aspirations and objectives
<b>B</b>	Deterioration to a point of terminal decline of the health forests and ecosystems
<b>C</b>	No ongoing funding of pest management and co-managed areas.

### **11 Opportunities for conservation growth**

<b>A</b>	Opportunity for conservation growth from enhanced resourcing and collaboration with communities/Hapu/Iwi
<b>B</b>	Opportunity to build and strengthen relationships E.G. reconnecting Northland & Northland Regional Council ("NRC") including Hapu/Iwi.



Photo: Poroporo Berry, by Hamish Eglinton.

This report is presented to the New Zealand Conservation Authority as required by the Conservation Act and distributed to interested parties. Members of the public are welcome to attend Conservation Board meetings. If you would like more information on the Northland Conservation Board please see the website [www.conservationboards.org.nz](http://www.conservationboards.org.nz) or contact the Board Support Officer, at the Department of Conservation in Whangarei phone (09) 4 70 3 300 or e-mail [whangarei@doc.govt.nz](mailto:whangarei@doc.govt.nz).