

Study site information

11: Tukino ski field turn-off

Notes for schools and educators



Tukino ski field turn-off study site. Photo: Benjamin Moorhouse

Key information

Unmodified (by human activity) site in an alpine environment

This 20 x 20 m plot is an unmodified location within a low/mid altitude alpine environment. The area is next to SH1.

This site sits on the eastern side of the mountains in the rain shadow (see Section 4, page 4). It has wind-blown dunes made up of finer-grained ash and pumice than the western sites.

For an overview of study sites see Section 4, page 7.

More information on sites around the ski field

[Topographic map of New Zealand](#)

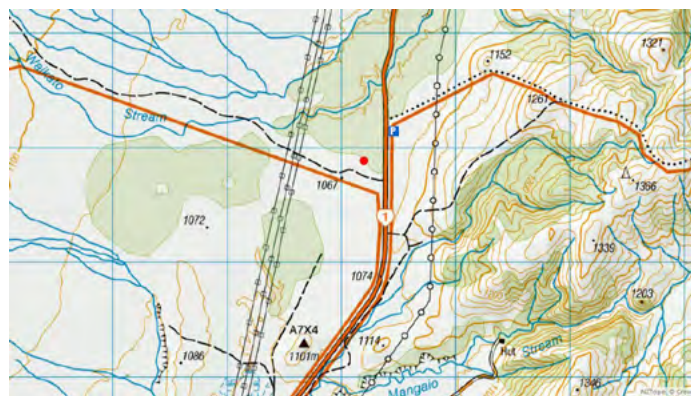
.....

Getting to site

To access this site, take a turn-off from SH1, Desert Road just south of the border between Waikato and Manawatu-Wanganui. You will need to turn right (if travelling south) or left (if heading north) onto Tukino Access Road, a gravel road. There is a small yellow signpost at the junction and you will see a DOC sign 10 m along the road. Drive the vehicles about 50 m beyond the DOC sign and park beside the road.

On foot, turn right if facing the mountain; cross the road and the open space towards dunes/mounds covered in tussock. There are posts marking this site within the tussocks.

The red dot on the map indicates the location of the study site.



Visitor facilities and parking

Car parking is at the side of the road, with enough space for several coaches and minibuses. There are NO toilets at this site. The nearest toilets are in Waiouru (south) or Turangi (north).

.....



Department of
Conservation
Te Papa Atawhai

New Zealand Government

Recommended activities

- ▶ For pre- and post-field-trip learning activities see [Section 2](#).
- ▶ For information on NCEA assessment resources that could be linked to fieldwork at this site see [Section 3: Year 11–13 NCEA assessment resources](#).
- ▶ For ideas on practical learning activities across Tongariro National Park, see [Section 4](#):
 - Observation activity – page 9
 - Ideas for using study sites – page 10
 - Geology activity ideas – page 11
 - Human impact activities – pages 12 and 13.
- ▶ Using a measured transect or quadrat (1 x 1 m) you can investigate:
 - vegetation (eg tussock, vegetable sheep)
 - invertebrates (eg alpine grasshopper)
 - geology (eg rock types, erosion and origin).
- ▶ 5-minute bird count (eg pipit/pīhoihoi) – see [Experiencing Birds in your green space](#), page 10.
- ▶ Geology activity information in [Section 2](#), page 10. Geology activity sheets in [Section 7](#), pages 9–14.
 - Grain size comparison to western site – much finer here.
 - Wind-blown dunes have formed at this site.

Comparison sites

For an overview of study sites see [Section 4](#), page 7.

- ▶ *Mangatepopo site* for comparison with a non-modified site on the north-western side of the mountain at a similar altitude.
- ▶ *Whakapapanui Walk site* for comparison with a non-alpine forested environment.
- ▶ *Ohakune Mountain Road site* for comparison with a higher altitude alpine environment.

Health and safety

For general health and safety considerations see [Section 4](#), pages 8–9.

- ▶ Uneven surface off the track. Be careful of trip hazards.
- ▶ Weather – this site is exposed to the elements, and weather can change quickly. Make sure all students are prepared.
- ▶ Volcanically active area – make sure your group is aware of emergency warning and evacuation procedures. See www.doc.govt.nz/volcanicrisk.
- ▶ Busy highway nearby – beware of traffic.

Education providers working here

Hillary Outdoors:

www.hillaryoutdoors.co.nz/portfolio/opc-tongariro-2

Other education experiences in the area

For further information on activities in this area, see:

[Tongariro National Park information](#)

[Central North Island information](#)

[Tukino ski field](#)

