

# MOLESWORTH RECREATION RESERVE

## Long Gully Hunting Block

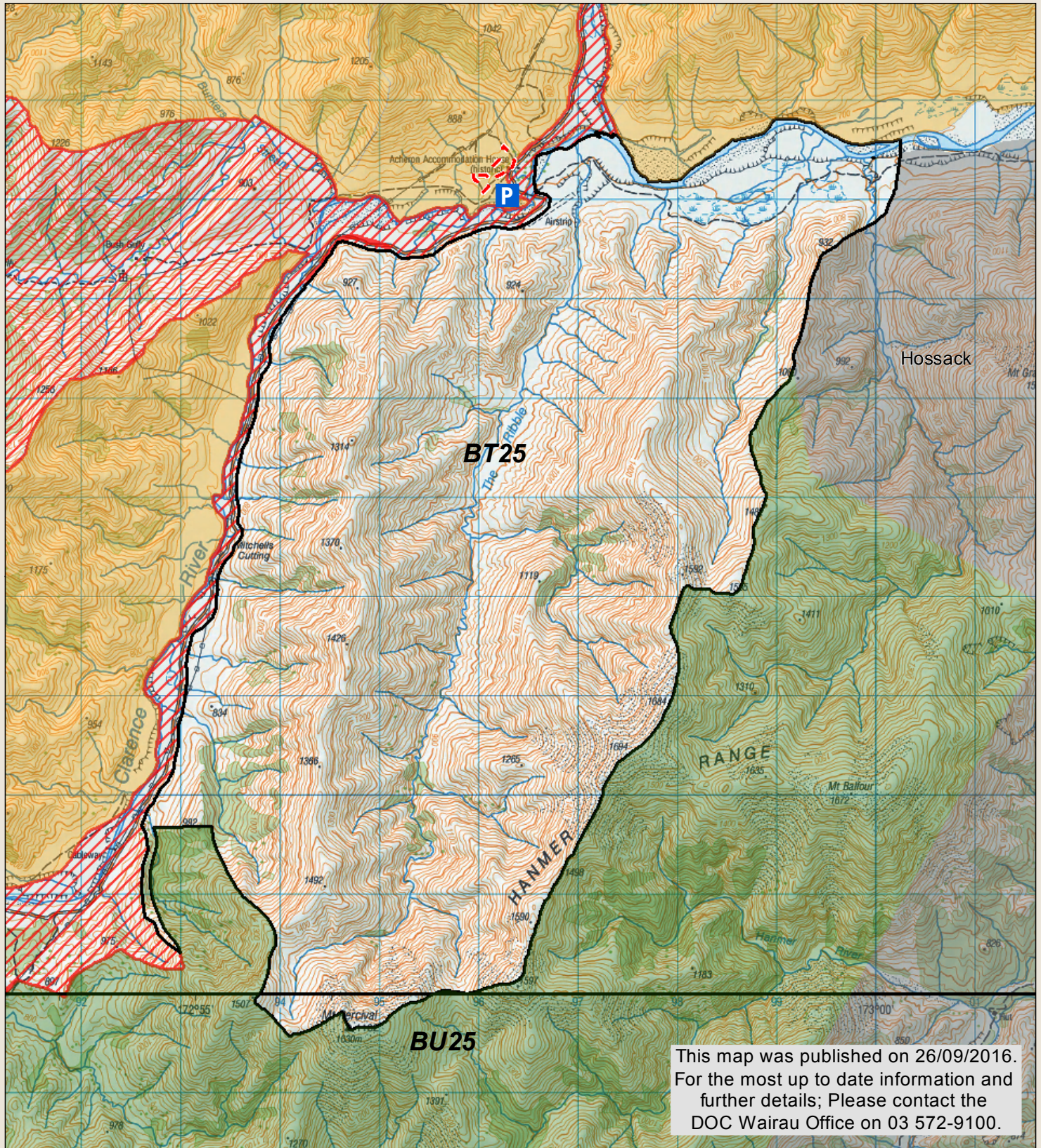
Check your permit and the DOC website for conditions that may apply to this area: [www.doc.govt.nz/hunting](http://www.doc.govt.nz/hunting)



Department of Conservation

*Te Papa Atawhai*

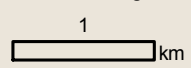
New Zealand Government



This map was published on 26/09/2016. For the most up to date information and further details; Please contact the DOC Wairau Office on 03 572-9100.

This map is a guide only and should not be used for navigational purposes. We recommend NZTopo50 series map(s)

- Block Parking
- DOC tracks - dog or firearm conditions may apply
- Topo50 map sheets
- Hunting is restricted
- Boundary of this block
- Hunting is prohibited
- Pastoral lease land (Permission from Station manager required)



September 2016  
Crown copyright reserved

\* No vehicle or public access to farm tracks, huts or yards  
\* Motorised vehicles are only allowed on the Acheron/Molesworth and Tophouse/Clarence/Rainbow Roads (note closure periods)